



# CP093 mouse mAb

Catalog No	BYmab-08685
Isotype	IgG
Reactivity	Human; Mouse
Applications	WB
Gene Name	C16orf93
Protein Name	CP093
Immunogen	Synthesized peptide derived from human CP093 AA range: 250-300
Specificity	This antibody detects endogenous levels of CP093 at Human/Mouse
Formulation	Liquid in PBS containing 50% glycerol, 0.5% BSA and 0.02% sodium azide.
Source	Monoclonal, Mouse,IgG
Purification	The antibody was affinity-purified from mouse antiserum by affinity-chromatography using epitope-specific immunogen.
Dilution	WB 1:500-2000
Concentration	1 mg/ml
Purity	≥90%
Storage Stability	-20°C/1 year
Synonyms	
Observed Band	
Cell Pathway	Cell projection, cilium, flagellum . Cytoplasmic vesicle, secretory vesicle, acrosome . Cytoplasm . In elongated spermatids, enriched in the principal piece of flagella where it is peri-axonemal. Disappears from sperm heads upon acrosome reaction. .
Tissue Specificity	
Function	
Background	
matters needing attention	Avoid repeated freezing and thawing!

Nanjing BYabscience technology Co.,Ltd

网址: [www.njbybio.com](http://www.njbybio.com)

官方热线: 025-5229-8998

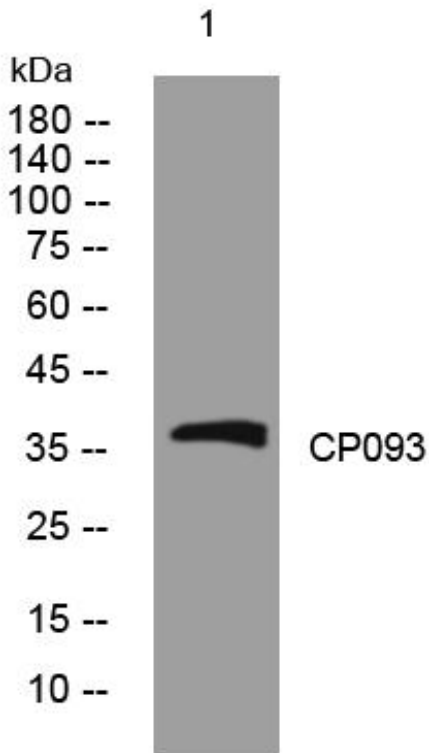
监督电话: 15950492658



### Usage suggestions

This product can be used in immunological reaction related experiments. For more information, please consult technical personnel.

## Products Images



Western Blot analysis of various cells using CP093 mouse mAb

Nanjing BYabs science technology Co.,Ltd

网址: [www.njbybio.com](http://www.njbybio.com)

官方热线: 025-5229-8998

监督电话: 15950492658