



GLIS2 mouse mAb

Catalog No	BYmab-08682
Isotype	IgG
Reactivity	Human; Mouse
Applications	WB
Gene Name	GLIS2 NKL
Protein Name	GLIS2
Immunogen	Synthesized peptide derived from human GLIS2 AA range: 442-492
Specificity	This antibody detects endogenous levels of GLIS2 at Human/Mouse
Formulation	Liquid in PBS containing 50% glycerol, 0.5% BSA and 0.02% sodium azide.
Source	Monoclonal, Mouse,IgG
Purification	The antibody was affinity-purified from mouse antiserum by affinity-chromatography using epitope-specific immunogen.
Dilution	WB 1:500-2000
Concentration	1 mg/ml
Purity	≥90%
Storage Stability	-20°C/1 year
Synonyms	
Observed Band	
Cell Pathway	Nucleus speckle . Cytoplasm .
Tissue Specificity	Expressed at high levels in kidney and at low levels in heart, lung and placenta. Expressed in colon.
Function	disease:Defects in GLIS2 are the cause of nephronophthisis type 7 (NPHP7) [MIM:611498]. NPHP7 is an autosomal recessive disorder resulting in end-stage renal disease during childhood or adolescence. It is a progressive tubulo-interstitial kidney disorder histologically characterized by modifications of the tubules with thickening of the basement membrane, interstitial fibrosis and, in the advanced stages, medullary cysts.,domain:The C2H2-type zinc finger 1 has a major repressor function and is required for CTNNB1 binding.,function:Can act either as a transcription repressor or as a transcription activator, depending on the cell context. Represses the transcriptional activation mediated by CTNNB1 in the Wnt pathway. May act by recruiting the corepressors CTBP1 and HDAC3. May be involved in neuron differentiation.,PTM:C-terminus cleavage is induced by interaction with CTNND1 and enhanced b

Nanjing BYabscience technology Co.,Ltd



Background

This gene is a member of the GLI-similar zinc finger protein family and encodes a nuclear transcription factor with five C2H2-type zinc finger domains. The protein encoded by this gene is widely expressed at low levels in the neural tube and peripheral nervous system and likely promotes neuronal differentiation. It is abundantly expressed in the kidney and may have a role in the regulation of kidney morphogenesis. p120 regulates the expression level of this protein and induces the cleavage of this protein's C-terminal zinc finger domain. This protein also promotes the nuclear translocation of p120. Mutations in this gene cause nephronophthisis (NPHP), an autosomal recessive kidney disease characterized by tubular basement membrane disruption, interstitial lymphohistiocytic cell infiltration, and development of cysts at the corticomedullary border of the kidneys.[provided by RefSeq, Jan 2010],

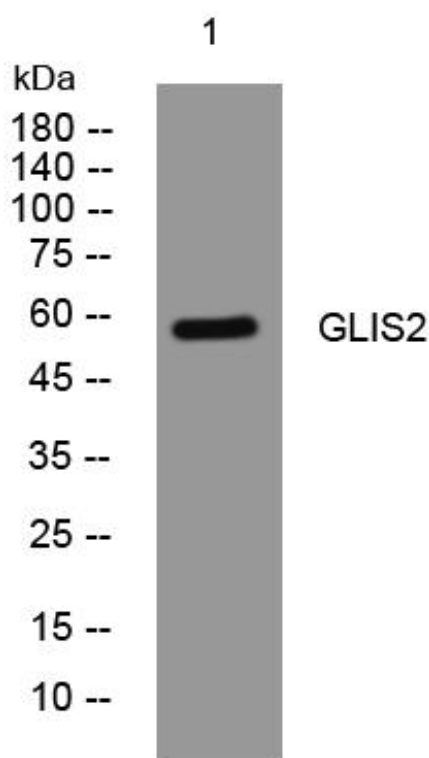
matters needing attention

Avoid repeated freezing and thawing!

Usage suggestions

This product can be used in immunological reaction related experiments. For more information, please consult technical personnel.

Products Images



Western Blot analysis of various cells using GLIS2 mouse mAb