



# ADH1G mouse mAb

<b>Catalog No</b>	BYmab-08675
<b>Isotype</b>	IgG
<b>Reactivity</b>	Human;Rat;Mouse;
<b>Applications</b>	WB
<b>Gene Name</b>	ADH1C ADH3
<b>Protein Name</b>	ADH1G
<b>Immunogen</b>	Synthesized peptide derived from human ADH1G AA range: 185-235
<b>Specificity</b>	This antibody detects endogenous levels of ADH1G at Human
<b>Formulation</b>	Liquid in PBS containing 50% glycerol, 0.5% BSA and 0.02% sodium azide.
<b>Source</b>	Monoclonal, Mouse,IgG
<b>Purification</b>	The antibody was affinity-purified from mouse antiserum by affinity-chromatography using epitope-specific immunogen.
<b>Dilution</b>	WB 1:500-2000
<b>Concentration</b>	1 mg/ml
<b>Purity</b>	≥90%
<b>Storage Stability</b>	-20°C/1 year
<b>Synonyms</b>	
<b>Observed Band</b>	
<b>Cell Pathway</b>	Cytoplasm.
<b>Tissue Specificity</b>	
<b>Function</b>	<p>catalytic activity:An alcohol + NAD(+) = an aldehyde or ketone + NADH.,cofactor:Binds 2 zinc ions per subunit.,miscellaneous:There are 7 different ADH's isozymes in human: three belongs to class-I: alpha, beta, and gamma, one to class-II: pi, one to class-III: chi, one to class-IV: ADH7 and one to class-V: ADH6.,polymorphism:Three alleles are known: ADH1B*1 (ADH2*1) corresponding to variant beta-1, ADH1B*2 (ADH2*2) corresponding to variant beta-2, ADH1B*3 (ADH2*3) corresponding to variant beta-3. The sequence shown is that of allele ADH1B*1. The ADH1B*2 allele frequency in orientals is approximately 75%, whereas it is less than 5% in most Caucasian populations.,polymorphism:Two main alleles are known, ADH3*1 or gamma-1 has Arg-272/Ile-350 while ADH3*2 or gamma-2 has Gln-272/Val-350. ADH3*1 is associated with a fast rate of ethanol oxidation and ADH3*2 with a slow</p>

**Nanjing BYabscience technology Co.,Ltd**



rate.,similarity:Belongs

#### Background

This gene encodes class I alcohol dehydrogenase, gamma subunit, which is a member of the alcohol dehydrogenase family. Members of this enzyme family metabolize a wide variety of substrates, including ethanol, retinol, other aliphatic alcohols, hydroxysteroids, and lipid peroxidation products. Class I alcohol dehydrogenase, consisting of several homo- and heterodimers of alpha, beta, and gamma subunits, exhibits high activity for ethanol oxidation and plays a major role in ethanol catabolism. Three genes encoding alpha, beta and gamma subunits are tandemly organized in a genomic segment as a gene cluster. [provided by RefSeq, Jul 2008],

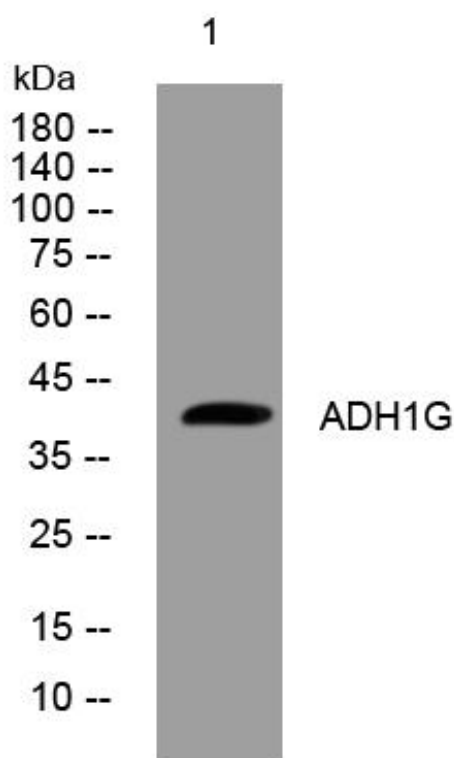
#### matters needing attention

Avoid repeated freezing and thawing!

#### Usage suggestions

This product can be used in immunological reaction related experiments. For more information, please consult technical personnel.

### Products Images



Western Blot analysis of various cells using ADH1G mouse mAb

Nanjing BYabscience technology Co.,Ltd

网址: [www.njbybio.com](http://www.njbybio.com)

官方热线: 025-5229-8998

监督电话: 15950492658