



IFT46 mouse mAb

Catalog No	BYmab-08674
Isotype	IgG
Reactivity	Human; Mouse;Rat
Applications	WB
Gene Name	IFT46 C11orf2 C11orf60
Protein Name	IFT46
Immunogen	Synthesized peptide derived from human IFT46 AA range: 243-293
Specificity	This antibody detects endogenous levels of IFT46 at Human/Mouse/Rat
Formulation	Liquid in PBS containing 50% glycerol, 0.5% BSA and 0.02% sodium azide.
Source	Monoclonal, Mouse,IgG
Purification	The antibody was affinity-purified from mouse antiserum by affinity-chromatography using epitope-specific immunogen.
Dilution	WB 1:500-2000
Concentration	1 mg/ml
Purity	≥90%
Storage Stability	-20°C/1 year
Synonyms	
Observed Band	
Cell Pathway	Cytoplasm, cytoskeleton, cilium basal body . Cell projection, cilium . Expression is concentrated at the cilium basal body but is also detected along the length of the cilium. .
Tissue Specificity	
Function	caution:Has been termed C11orf2 (PubMed:10873569), but is not the official C11orf2 as defined by HGNC.,similarity:Belongs to the UPF0360 family.,
Background	
matters needing attention	Avoid repeated freezing and thawing!

Nanjing BYabscience technology Co.,Ltd

网址: www.njbybio.com

官方热线: 025-5229-8998

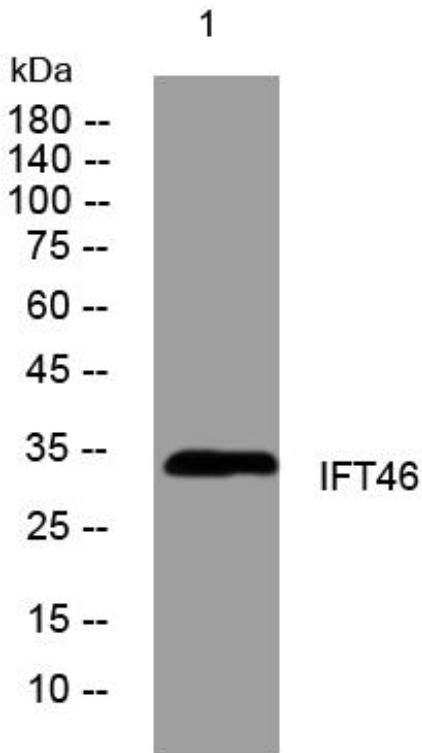
监督电话: 15950492658



Usage suggestions

This product can be used in immunological reaction related experiments. For more information, please consult technical personnel.

Products Images



Western Blot analysis of various cells using IFT46 mouse mAb

Nanjing BYabs science technology Co.,Ltd

网址: www.njbybio.com

官方热线: 025-5229-8998

监督电话: 15950492658