



ASB1 mouse mAb

Catalog No	BYmab-08673
Isotype	IgG
Reactivity	Human; Mouse
Applications	WB
Gene Name	ASB1 KIAA1146
Protein Name	ASB1
Immunogen	Synthesized peptide derived from human ASB1 AA range: 76-126
Specificity	This antibody detects endogenous levels of ASB1 at Human/Mouse
Formulation	Liquid in PBS containing 50% glycerol, 0.5% BSA and 0.02% sodium azide.
Source	Monoclonal, Mouse,IgG
Purification	The antibody was affinity-purified from mouse antiserum by affinity-chromatography using epitope-specific immunogen.
Dilution	WB 1:500-2000
Concentration	1 mg/ml
Purity	≥90%
Storage Stability	-20°C/1 year
Synonyms	
Observed Band	
Cell Pathway	intracellular,
Tissue Specificity	
Function	domain:The SOCS box domain mediates the interaction with the Elongin BC complex, an adapter module in different E3 ubiquitin-protein ligase complexes.,function:May play a role in testis development (By similarity). Probable substrate-recognition component of a SCF-like ECS (Elongin-Cullin-SOCS-box protein) E3 ligase complex which mediates the ubiquitination and subsequent proteasomal degradation of target proteins.,pathway:Protein modification; protein ubiquitination.,similarity:Contains 1 SOCS box domain.,similarity:Contains 6 ANK repeats.,subunit:Interacts with CUL5 and RNF7.,
Background	The protein encoded by this gene contains an ankyrin repeat sequence and SOCS box domain. The SOCS box serves to couple suppressor of cytokine

Nanjing BYabscience technology Co.,Ltd



signalling (SOCS) proteins and their binding partners with the elongin B and C complex, targeting them for ubiquitination and degradation. [provided by RefSeq, Aug 2016],

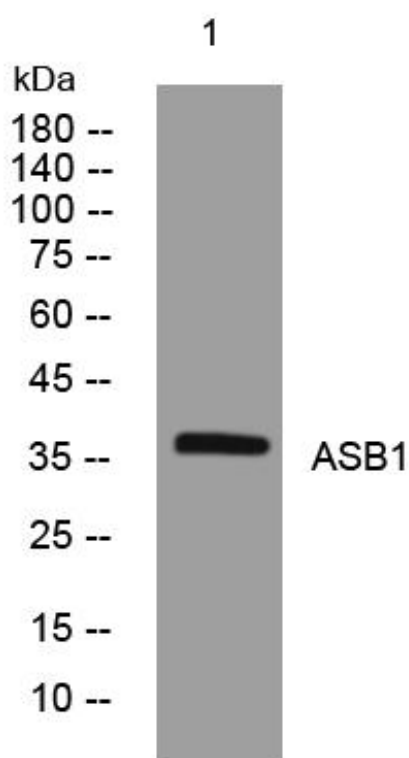
matters needing attention

Avoid repeated freezing and thawing!

Usage suggestions

This product can be used in immunological reaction related experiments. For more information, please consult technical personnel.

Products Images



Western Blot analysis of various cells using ASB1 mouse mAb