



PDE6D mouse mAb

Catalog No	BYmab-08659
Isotype	IgG
Reactivity	Human; Mouse
Applications	WB
Gene Name	PDE6D PDED
Protein Name	PDE6D
Immunogen	Synthesized peptide derived from human PDE6D AA range: 89-139
Specificity	This antibody detects endogenous levels of PDE6D at Human/Mouse
Formulation	Liquid in PBS containing 50% glycerol, 0.5% BSA and 0.02% sodium azide.
Source	Monoclonal, Mouse,IgG
Purification	The antibody was affinity-purified from mouse antiserum by affinity-chromatography using epitope-specific immunogen.
Dilution	WB 1:500-2000
Concentration	1 mg/ml
Purity	≥90%
Storage Stability	-20°C/1 year
Synonyms	
Observed Band	
Cell Pathway	Cytoplasm, cytosol . Cytoplasmic vesicle membrane ; Peripheral membrane protein . Cytoplasm, cytoskeleton, cilium basal body .
Tissue Specificity	Widely expressed. Detected in various tissues including spleen, prostate gland, testis, ovary, small intestine, colon, retina, and peripheral blood.
Function	similarity:Belongs to the PDE6D/unc-119 family.,subunit:Oligomer composed of two catalytic chains (alpha and beta), an inhibitory chain (gamma) and the delta chain. Interacts with RPGR, ARL2 and ARL3.,tissue specificity:Retina.,
Background	This gene encodes the delta subunit of rod-specific photoreceptor phosphodiesterase (PDE), a key enzyme in the phototransduction cascade. A similar protein in cow functions in solubilizing membrane-bound PDE. In addition to its role in the PDE complex, the encoded protein is thought to bind to prenyl groups of proteins to target them to subcellular organelles called cilia. Mutations in this gene are associated with Joubert syndrome-22. Alternative splicing results in multiple splice variants. [provided by RefSeq, Mar 2014],

Nanjing BYabscience technology Co.,Ltd



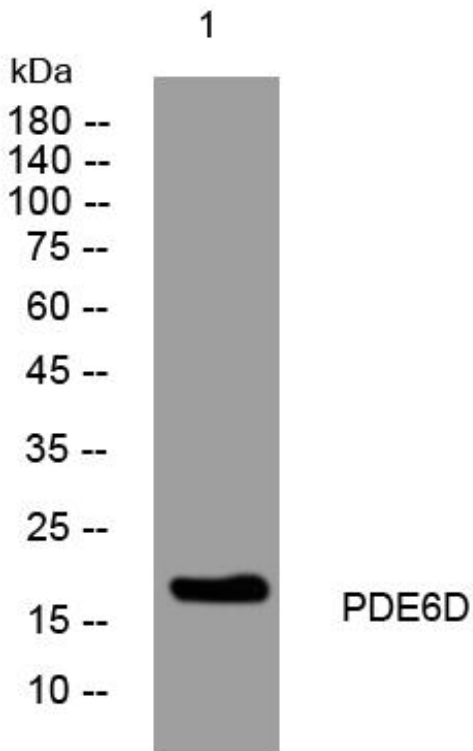
matters needing attention

Avoid repeated freezing and thawing!

Usage suggestions

This product can be used in immunological reaction related experiments. For more information, please consult technical personnel.

Products Images



Western Blot analysis of various cells using PDE6D mouse mAb

Nanjing BYabs science technology Co.,Ltd

网址: www.njbybio.com

官方热线: 025-5229-8998

监督电话: 15950492658