



# PIGU mouse mAb

<b>Catalog No</b>	BYmab-08649
<b>Isotype</b>	IgG
<b>Reactivity</b>	Human; Mouse;Rat
<b>Applications</b>	WB
<b>Gene Name</b>	PIGU CDC91L1 PSEC0205 UNQ3055/PRO9875
<b>Protein Name</b>	PIGU
<b>Immunogen</b>	Synthesized peptide derived from human PIGU AA range: 313-363
<b>Specificity</b>	This antibody detects endogenous levels of PIGU at Human/Mouse/Rat
<b>Formulation</b>	Liquid in PBS containing 50% glycerol, 0.5% BSA and 0.02% sodium azide.
<b>Source</b>	Monoclonal, Mouse,IgG
<b>Purification</b>	The antibody was affinity-purified from mouse antiserum by affinity-chromatography using epitope-specific immunogen.
<b>Dilution</b>	WB 1:500-2000
<b>Concentration</b>	1 mg/ml
<b>Purity</b>	≥90%
<b>Storage Stability</b>	-20°C/1 year
<b>Synonyms</b>	
<b>Observed Band</b>	48kD
<b>Cell Pathway</b>	Endoplasmic reticulum membrane ; Multi-pass membrane protein .
<b>Tissue Specificity</b>	
<b>Function</b>	function:Component of the GPI transamidase complex. May be involved in the recognition of either the GPI attachment signal or the lipid portion of GPI.,pathway:Glycolipid biosynthesis; glycosylphosphatidylinositol-anchor biosynthesis.,similarity:Belongs to the PIGU family.,subunit:Forms a complex with PIGK/GPI8, PIGS, PIGT and GPAA1/GAA1.,
<b>Background</b>	The protein encoded by this gene shares similarity with Saccharomyces cerevisiae Cdc91, a predicted integral membrane protein that may function in cell division control. The protein encoded by this gene is the fifth subunit of GPI transamidase that attaches GPI-anchors to proteins. [provided by RefSeq, Jul 2008],

**Nanjing BYabscience technology Co.,Ltd**



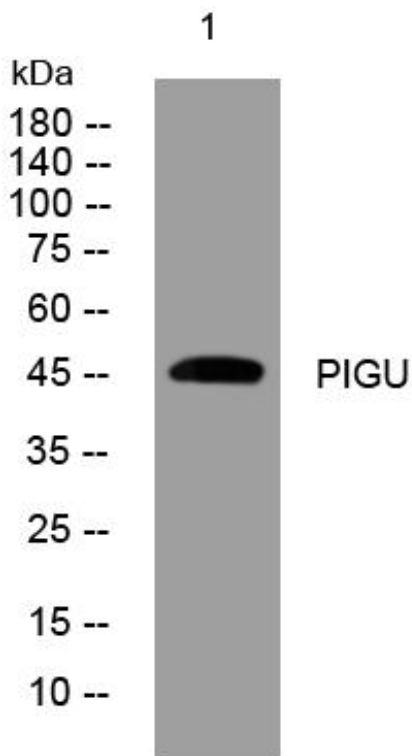
**matters needing attention**

Avoid repeated freezing and thawing!

**Usage suggestions**

This product can be used in immunological reaction related experiments. For more information, please consult technical personnel.

## Products Images



Western Blot analysis of various cells using PIGU mouse mAb