



# CHIC2 mouse mAb

Catalog No	BYmab-08647
Isotype	IgG
Reactivity	Human; Mouse
Applications	WB
Gene Name	CHIC2 BTL
Protein Name	CHIC2
Immunogen	Synthesized peptide derived from human CHIC2 AA range: 111-161
Specificity	This antibody detects endogenous levels of CHIC2 at Human/Mouse
Formulation	Liquid in PBS containing 50% glycerol, 0.5% BSA and 0.02% sodium azide.
Source	Monoclonal, Mouse,IgG
Purification	The antibody was affinity-purified from mouse antiserum by affinity-chromatography using epitope-specific immunogen.
Dilution	WB 1:500-2000
Concentration	1 mg/ml
Purity	≥90%
Storage Stability	-20°C/1 year
Synonyms	
Observed Band	
Cell Pathway	Cell membrane . Cytoplasmic vesicle . Also present at a Golgi-like vesicular compartment and at scattered vesicles.
Tissue Specificity	
Function	disease:A chromosomal aberration involving CHIC2 is found in a form of acute myeloid leukemia (AML). Translocation t(4;12)(q12;p13) with ETV6.,PTM:Palmitoylation in the CHIC motif is required for membrane association.,similarity:Belongs to the CHIC family.,subcellular location:Also present at a Golgi-like vesicular compartment and at scattered vesicles.,
Background	This gene encodes a member of the CHIC family of proteins. The encoded protein contains a cysteine-rich hydrophobic (CHIC) motif, and is localized to vesicular structures and the plasma membrane. This gene is associated with some cases of acute myeloid leukemia. [provided by RefSeq, Jul 2008],

Nanjing BYabscience technology Co.,Ltd



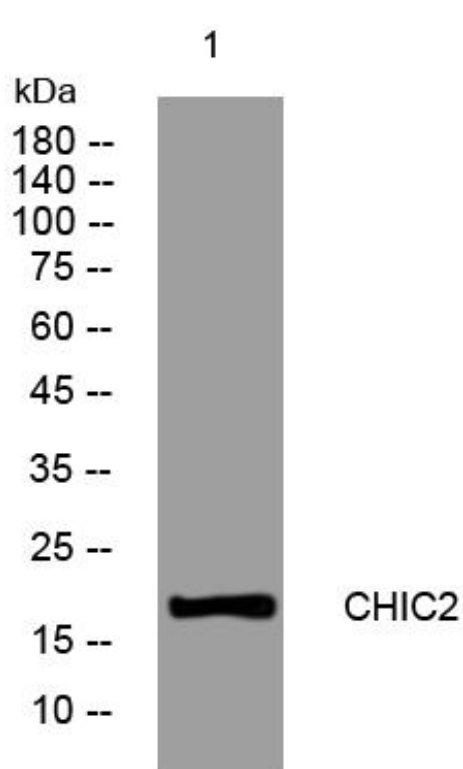
**matters needing attention**

Avoid repeated freezing and thawing!

**Usage suggestions**

This product can be used in immunological reaction related experiments. For more information, please consult technical personnel.

## Products Images



Western Blot analysis of various cells using CHIC2 mouse mAb

Nanjing BYabs science technology Co.,Ltd

网址: [www.njbybio.com](http://www.njbybio.com)

官方热线: 025-5229-8998

监督电话: 15950492658