



CT203 mouse mAb

Catalog No	BYmab-08635
Isotype	IgG
Reactivity	Human;Rat;Mouse;
Applications	WB
Gene Name	C20orf203
Protein Name	CT203
Immunogen	Synthesized peptide derived from human CT203 AA range: 10-60
Specificity	This antibody detects endogenous levels of CT203 at Human
Formulation	Liquid in PBS containing 50% glycerol, 0.5% BSA and 0.02% sodium azide.
Source	Monoclonal, Mouse,IgG
Purification	The antibody was affinity-purified from mouse antiserum by affinity-chromatography using epitope-specific immunogen.
Dilution	WB 1:500-2000
Concentration	1 mg/ml
Purity	≥90%
Storage Stability	-20°C/1 year
Synonyms	
Observed Band	
Cell Pathway	Cytoplasm .
Tissue Specificity	Expressed most abundantly in the brain at protein level. Present in cortex, cerebellum and midbrain. Found in neurons. Elevated expressions detected in Alzheimer brain samples. Also expressed in testis.
Function	
Background	
matters needing attention	Avoid repeated freezing and thawing!

Nanjing BYabscience technology Co.,Ltd

网址: www.njbybio.com

官方热线: 025-5229-8998

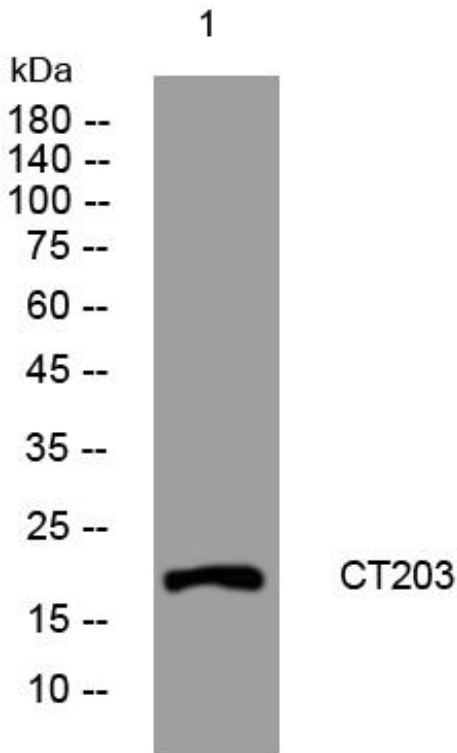
监督电话: 15950492658



Usage suggestions

This product can be used in immunological reaction related experiments. For more information, please consult technical personnel.

Products Images



Western Blot analysis of various cells using CT203 mouse mAb

Nanjing BYabs science technology Co.,Ltd

网址: www.njbybio.com

官方热线: 025-5229-8998

监督电话: 15950492658