



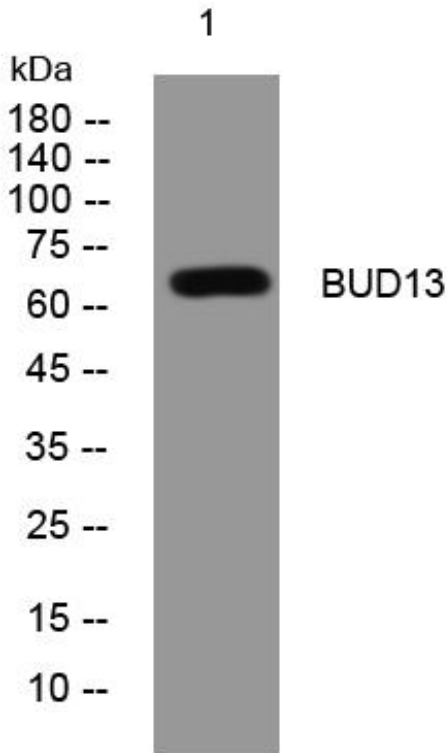
BUD13 mouse mAb

Catalog No	BYmab-08622
Isotype	IgG
Reactivity	Human; Mouse;Rat
Applications	WB
Gene Name	BUD13
Protein Name	BUD13
Immunogen	Synthesized peptide derived from human BUD13 AA range: 6-56
Specificity	This antibody detects endogenous levels of BUD13 at Human/Mouse/Rat
Formulation	Liquid in PBS containing 50% glycerol, 0.5% BSA and 0.02% sodium azide.
Source	Monoclonal, Mouse,IgG
Purification	The antibody was affinity-purified from mouse antiserum by affinity-chromatography using epitope-specific immunogen.
Dilution	WB 1:500-2000
Concentration	1 mg/ml
Purity	≥90%
Storage Stability	-20°C/1 year
Synonyms	
Observed Band	
Cell Pathway	Nucleus .
Tissue Specificity	
Function	similarity:Belongs to the CWC26 family.,
Background	
matters needing attention	Avoid repeated freezing and thawing!
Usage suggestions	This product can be used in immunological reaction related experiments. For more information, please consult technical personnel.

Nanjing BYabscience technology Co.,Ltd



Products Images



Western Blot analysis of various cells using BUD13 mouse mAb