



KIF15 mouse mAb

Catalog No	BYmab-08621
Isotype	IgG
Reactivity	Human; Mouse;Rat
Applications	WB
Gene Name	KIF15 KLP2 KNSL7
Protein Name	KIF15
Immunogen	Synthesized peptide derived from human KIF15 AA range: 974-1024
Specificity	This antibody detects endogenous levels of KIF15 at Human/Mouse/Rat
Formulation	Liquid in PBS containing 50% glycerol, 0.5% BSA and 0.02% sodium azide.
Source	Monoclonal, Mouse,IgG
Purification	The antibody was affinity-purified from mouse antiserum by affinity-chromatography using epitope-specific immunogen.
Dilution	WB 1:500-2000
Concentration	1 mg/ml
Purity	≥90%
Storage Stability	-20°C/1 year
Synonyms	
Observed Band	
Cell Pathway	Cytoplasm. Cytoplasm, cytoskeleton, spindle. Detected during the interphase in the cytoplasm as finely punctuate pattern and irregularly shaped dots. Detected during mitosis on the mitotic spindle. Colocalizes with TPX2 in mitosis. Localizes at the central spindle at anaphase (By similarity). Localizes at the sites of invaginating cell membranes, a position that corresponds to the location of the contractile actomyosin ring of dividing cells (By similarity). Colocalizes with actin in interphase (By similarity). Colocalizes in dendrites and in growth cone of axons with microtubules (By similarity). .
Tissue Specificity	Expressed in testis, colon, thymus and in breast cancer.
Function	function:Plus-end directed kinesin-like motor enzyme involved in mitotic spindle assembly.,similarity:Belongs to the kinesin-like protein family. KLP2 subfamily.,similarity:Contains 1 kinesin-motor domain.,subcellular location:Detected during the interphase in the cytoplasm as finely punctuate pattern and irregularly shaped dots. Detected during mitosis on the mitotic spindle. Colocalizes with TPX2 in mitosis. Localizes at the central spindle at

Nanjing BYabscience technology Co.,Ltd



anaphase (By similarity). Localizes at the sites of invaginating cell membranes, a position that corresponds to the location of the contractile actomyosin ring of dividing cells (By similarity). Colocalizes with actin in interphase (By similarity). Colocalizes in dendrites and in growth cone of axons with microtubules.,subunit:Interacts with MKI67 and TPX2.,tissue specificity:Expressed in testis, colon, tymus and in breast cancer.,

Background

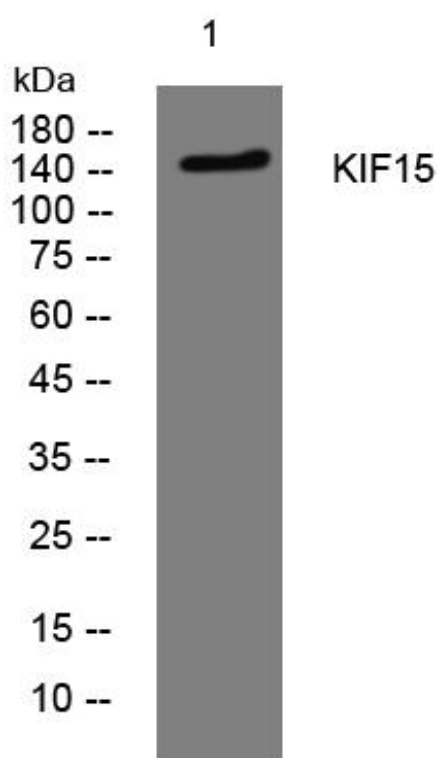
matters needing attention

Avoid repeated freezing and thawing!

Usage suggestions

This product can be used in immunological reaction related experiments. For more information, please consult technical personnel.

Products Images



Western Blot analysis of various cells using KIF15 mouse mAb

Nanjing BYabscience technology Co.,Ltd

网址: www.njbybio.com

官方热线: 025-5229-8998

监督电话: 15950492658