



CL12B mouse mAb

Catalog No	BYmab-08616
Isotype	IgG
Reactivity	Human; Mouse
Applications	WB
Gene Name	CLEC12B UNQ5782/PRO16089
Protein Name	CL12B
Immunogen	Synthesized peptide derived from human CL12B AA range: 111-161
Specificity	This antibody detects endogenous levels of CL12B at Human/Mouse
Formulation	Liquid in PBS containing 50% glycerol, 0.5% BSA and 0.02% sodium azide.
Source	Monoclonal, Mouse,IgG
Purification	The antibody was affinity-purified from mouse antiserum by affinity-chromatography using epitope-specific immunogen.
Dilution	WB 1:500-2000
Concentration	1 mg/ml
Purity	≥90%
Storage Stability	-20°C/1 year
Synonyms	
Observed Band	
Cell Pathway	Cell membrane ; Single-pass type II membrane protein .
Tissue Specificity	Detected in colon, heart, kidney, liver, lung, mammary gland, ovary, spleen and testis (PubMed:17562706). Expressed in melanocytes (at protein level) (PubMed:34310951).
Function	domain:Contains 1 copy of a cytoplasmic motif that is referred to as the immunoreceptor tyrosine-based inhibitor motif (ITIM). This motif is involved in modulation of cellular responses. The phosphorylated ITIM motif can bind the SH2 domain of several SH2-containing phosphatases.,function:Cell surface receptor that modulates signaling cascades and mediates tyrosine phosphorylation of target MAP kinases.,function:Cell surface receptor that protects target cells against natural killer cell-mediated lysis. Modulates signaling cascades and mediates tyrosine phosphorylation of target MAP kinases.,induction:Down-regulated in activated leukocytes recruited to a site of inflammation.,PTM:Highly N-glycosylated. Glycosylation varies between cell types.,similarity:Contains 1 C-type lectin domain.,subcellular location:Ligand

Nanjing BYabscience technology Co.,Ltd



binding leads to internalization.,subunit:Homodimer. Interacts with PTPN6 a

Background

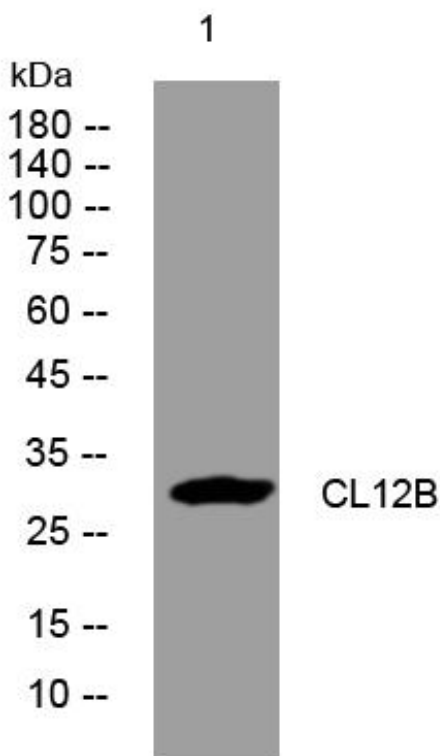
matters needing attention

Avoid repeated freezing and thawing!

Usage suggestions

This product can be used in immunological reaction related experiments. For more information, please consult technical personnel.

Products Images



Western Blot analysis of various cells using CL12B mouse mAb

Nanjing BYabscience technology Co.,Ltd

网址: www.njbybio.com

官方热线: 025-5229-8998

监督电话: 15950492658