



S61A1 mouse mAb

Catalog No	BYmab-08614
Isotype	IgG
Reactivity	Human; Mouse;Rat
Applications	WB
Gene Name	SEC61A1 SEC61A
Protein Name	S61A1
Immunogen	Synthesized peptide derived from human S61A1 AA range: 333-383
Specificity	This antibody detects endogenous levels of S61A1 at Human/Mouse/Rat
Formulation	Liquid in PBS containing 50% glycerol, 0.5% BSA and 0.02% sodium azide.
Source	Monoclonal, Mouse,IgG
Purification	The antibody was affinity-purified from mouse antiserum by affinity-chromatography using epitope-specific immunogen.
Dilution	WB 1:500-2000
Concentration	1 mg/ml
Purity	≥90%
Storage Stability	-20°C/1 year
Synonyms	
Observed Band	
Cell Pathway	Endoplasmic reticulum membrane ; Multi-pass membrane protein . Localizes exclusively in granular structures in the endoplasmic reticulum (ER). .
Tissue Specificity	Expressed in proximal and distal tubules in kidney (at protein level).
Function	function:Plays a crucial role in the insertion of secretory and membrane polypeptides into the ER. Required for assembly of membrane and secretory proteins. Tightly associated with membrane-bound ribosomes, either directly or through adapter proteins.,similarity:Belongs to the secY/SEC61-alpha family.,subunit:Heterotrimeric complex composed of SEC61-alpha, SEC61-beta and SEC61-gamma.,
Background	The protein encoded by this gene belongs to the SECY/SEC61- alpha family. It appears to play a crucial role in the insertion of secretory and membrane polypeptides into the endoplasmic reticulum. This protein found to be tightly associated with membrane-bound ribosomes, either directly or through adaptor proteins. This gene encodes an alpha subunit of the heteromeric SEC61 complex,

Nanjing BYabscience technology Co.,Ltd



which also contains beta and gamma subunits. [provided by RefSeq, Jul 2008],

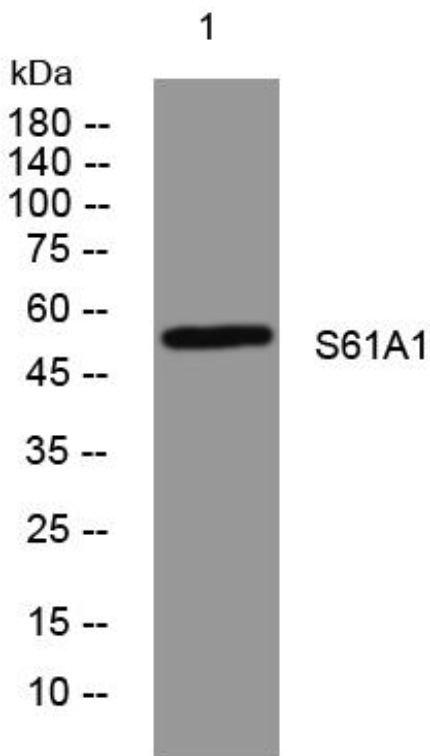
matters needing attention

Avoid repeated freezing and thawing!

Usage suggestions

This product can be used in immunological reaction related experiments. For more information, please consult technical personnel.

Products Images



Western Blot analysis of various cells using S61A1 mouse mAb