



SFR1 mouse mAb

Catalog No	BYmab-08607
Isotype	IgG
Reactivity	Human; Mouse;Rat
Applications	WB
Gene Name	SFR1 C10orf78 MEI5 MEIR5
Protein Name	SFR1
Immunogen	Synthesized peptide derived from human SFR1 AA range: 110-160
Specificity	This antibody detects endogenous levels of SFR1 at Human/Mouse/Rat
Formulation	Liquid in PBS containing 50% glycerol, 0.5% BSA and 0.02% sodium azide.
Source	Monoclonal, Mouse,IgG
Purification	The antibody was affinity-purified from mouse antiserum by affinity-chromatography using epitope-specific immunogen.
Dilution	WB 1:500-2000
Concentration	1 mg/ml
Purity	≥90%
Storage Stability	-20°C/1 year
Synonyms	
Observed Band	
Cell Pathway	Nucleus . Colocalizes with ESR1 in the nucleus. .
Tissue Specificity	Widely expressed.
Function	caution:It is uncertain whether Met-1 or Met-76 is the initiator.,
Background	
matters needing attention	Avoid repeated freezing and thawing!
Usage suggestions	This product can be used in immunological reaction related experiments. For more information, please consult technical personnel.

Nanjing BYabscience technology Co.,Ltd

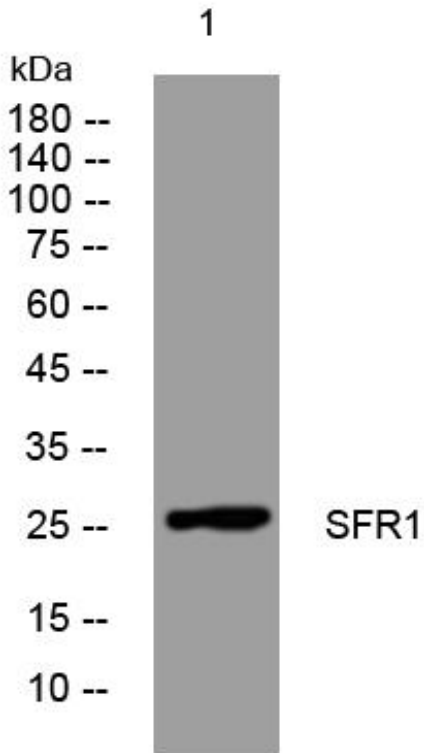
网址: www.njbybio.com

官方热线: 025-5229-8998

监督电话: 15950492658



Products Images



Western Blot analysis of various cells using SFR1 mouse mAb