



LCE2B mouse mAb

Catalog No	BYmab-08603
Isotype	IgG
Reactivity	Human;Rat;Mouse;
Applications	WB
Gene Name	LCE2B LEP10 SPRL1B XP5
Protein Name	LCE2B
Immunogen	Synthesized peptide derived from human LCE2B AA range: 31-81
Specificity	This antibody detects endogenous levels of LCE2B at Human
Formulation	Liquid in PBS containing 50% glycerol, 0.5% BSA and 0.02% sodium azide.
Source	Monoclonal, Mouse,IgG
Purification	The antibody was affinity-purified from mouse antiserum by affinity-chromatography using epitope-specific immunogen.
Dilution	WB 1:500-2000
Concentration	1 mg/ml
Purity	≥90%
Storage Stability	-20°C/1 year
Synonyms	
Observed Band	
Cell Pathway	cornified envelope,cytoplasm,
Tissue Specificity	Skin-specific. Expression was readily detected in adult trunk skin, adult arm skin, fetal skin, penal skin, vulva, esophagus and tongue. Not expressed in the cervix, rectum, lung, colon, or placenta.
Function	function:Precursors of the cornified envelope of the stratum corneum.,induction:By calcium and UVB.,miscellaneous:Belongs to the LCE cluster present on 1q21.,similarity:Belongs to the LCE family.,tissue specificity:Skin-specific. Expression was readily detected in adult trunk skin, adult arm skin, fetal skin, penal skin, vulva, esophagus and tongue. Not expressed in the cervix, rectum, lung, colon, or placenta.,
Background	This gene is one of the at least 20 genes expressed during epidermal differentiation and located on chromosomal band 1q21. This gene is involved in epidermal differentiation, and it is expressed at high levels in normal and psoriatic skin, but not in cultured keratinocytes or in any other tested cell types or tissues.

Nanjing BYabscience technology Co.,Ltd



[provided by RefSeq, Jul 2008],

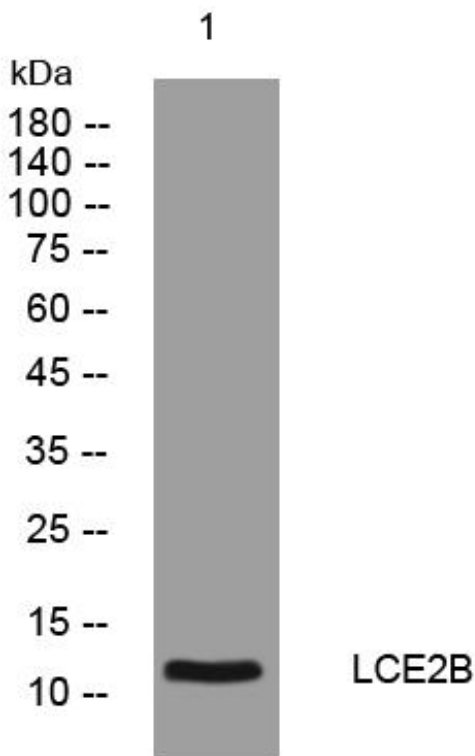
matters needing attention

Avoid repeated freezing and thawing!

Usage suggestions

This product can be used in immunological reaction related experiments. For more information, please consult technical personnel.

Products Images



Western Blot analysis of various cells using LCE2B mouse mAb

Nanjing BYabscience technology Co.,Ltd

网址: www.njbybio.com

官方热线: 025-5229-8998

监督电话: 15950492658