



# RBSK mouse mAb

<b>Catalog No</b>	BYmab-08579
<b>Isotype</b>	IgG
<b>Reactivity</b>	Human; Mouse
<b>Applications</b>	WB
<b>Gene Name</b>	RBKS RBSK
<b>Protein Name</b>	RBSK
<b>Immunogen</b>	Synthesized peptide derived from human RBSK AA range: 168-218
<b>Specificity</b>	This antibody detects endogenous levels of RBSK at Human/Mouse
<b>Formulation</b>	Liquid in PBS containing 50% glycerol, 0.5% BSA and 0.02% sodium azide.
<b>Source</b>	Monoclonal, Mouse,IgG
<b>Purification</b>	The antibody was affinity-purified from mouse antiserum by affinity-chromatography using epitope-specific immunogen.
<b>Dilution</b>	WB 1:500-2000
<b>Concentration</b>	1 mg/ml
<b>Purity</b>	≥90%
<b>Storage Stability</b>	-20°C/1 year
<b>Synonyms</b>	
<b>Observed Band</b>	
<b>Cell Pathway</b>	Cytoplasm . Nucleus .
<b>Tissue Specificity</b>	
<b>Function</b>	catalytic activity:ATP + D-ribose = ADP + D-ribose 5-phosphate.,enzyme regulation:Competitively inhibited by phosphonoacetic acid, etidronate, 2-carboxethylphosphonic acid, N-(phosphonomethyl)glycine, N-(phosphonomethyl)iminodiacetic acid and clodronate.,pathway:Carbohydrate metabolism; D-ribose degradation; D-ribose 5-phosphate from beta-D-ribopyranose: step 2/2.,similarity:Belongs to the carbohydrate kinase pfkB family.,
<b>Background</b>	This gene encodes a member of the carbohydrate kinase PfkB family. The encoded protein phosphorylates ribose to form ribose-5-phosphate in the presence of ATP and magnesium as a first step in ribose metabolism. Alternative splicing results in multiple transcript variants. [provided by RefSeq, Dec 2013],

**Nanjing BYabscience technology Co.,Ltd**



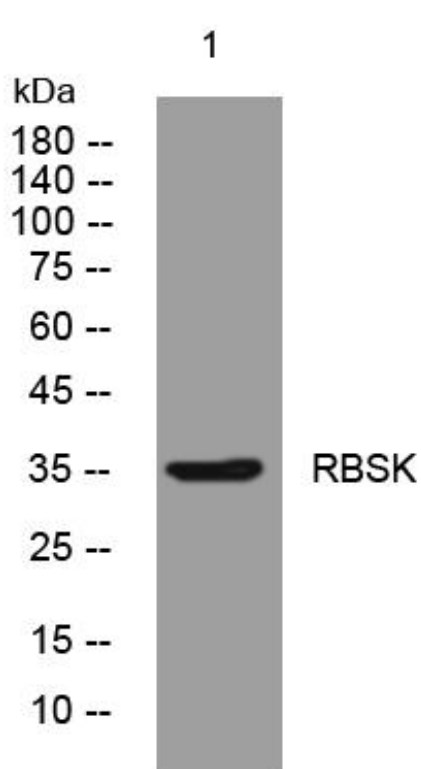
**matters needing attention**

Avoid repeated freezing and thawing!

**Usage suggestions**

This product can be used in immunological reaction related experiments. For more information, please consult technical personnel.

## Products Images



Western Blot analysis of various cells using RBSK mouse mAb