



CTR1 mouse mAb

Catalog No	BYmab-08571
Isotype	IgG
Reactivity	Human; Mouse;Rat
Applications	WB
Gene Name	SLC7A1 ATRC1 ERR REC1L
Protein Name	CTR1
Immunogen	Synthesized peptide derived from human CTR1 AA range: 298-348
Specificity	This antibody detects endogenous levels of CTR1 at Human/Mouse/Rat
Formulation	Liquid in PBS containing 50% glycerol, 0.5% BSA and 0.02% sodium azide.
Source	Monoclonal, Mouse,IgG
Purification	The antibody was affinity-purified from mouse antiserum by affinity-chromatography using epitope-specific immunogen.
Dilution	WB 1:500-2000
Concentration	1 mg/ml
Purity	≥90%
Storage Stability	-20°C/1 year
Synonyms	
Observed Band	69kD
Cell Pathway	Cell membrane ; Multi-pass membrane protein .
Tissue Specificity	Ubiquitous.
Function	function:High-affinity, low capacity permease involved in the transport of the cationic amino acids (arginine, lysine and ornithine) in non-hepatic tissues. May also function as an ecotropic retroviral leukemia receptor.,similarity:Belongs to the amino acid-polyamine-organocation (APC) superfamily. Cationic amino acid transporter (CAT) (TC 2.A.3.3) family.,tissue specificity:Ubiquitous.,
Background	
matters needing attention	Avoid repeated freezing and thawing!

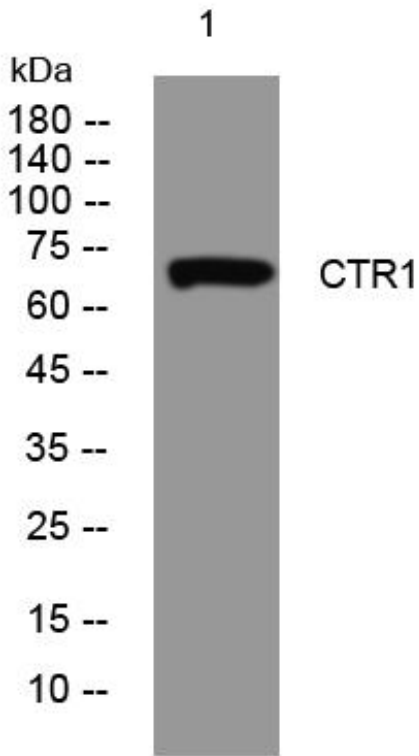
Nanjing BYabscience technology Co.,Ltd



Usage suggestions

This product can be used in immunological reaction related experiments. For more information, please consult technical personnel.

Products Images



Western Blot analysis of various cells using CTR1 mouse mAb

Nanjing BYabscience technology Co.,Ltd

网址: www.njbybio.com

官方热线: 025-5229-8998

监督电话: 15950492658