



# AT2A3 mouse mAb

|                           |  |
|---------------------------|--|
| <b>Catalog No</b>         | BYmab-08569  |
| <b>Isotype</b>            | IgG  |
| <b>Reactivity</b>         | Human; Mouse;Rat   |
| <b>Applications</b>       | WB   |
| <b>Gene Name</b>          | ATP2A3   |
| <b>Protein Name</b>       | AT2A3  |
| <b>Immunogen</b>          | Synthesized peptide derived from human AT2A3 AA range: 472-522   |
| <b>Specificity</b>        | This antibody detects endogenous levels of AT2A3 at Human/Mouse/Rat  |
| <b>Formulation</b>        | Liquid in PBS containing 50% glycerol, 0.5% BSA and 0.02% sodium azide.  |
| <b>Source</b>             | Monoclonal, Mouse,IgG  |
| <b>Purification</b>       | The antibody was affinity-purified from mouse antiserum by affinity-chromatography using epitope-specific immunogen.   |
| <b>Dilution</b>           | WB 1:500-2000  |
| <b>Concentration</b>      | 1 mg/ml  |
| <b>Purity</b>             | ≥90%   |
| <b>Storage Stability</b>  | -20°C/1 year   |
| <b>Synonyms</b>           |  |
| <b>Observed Band</b>      |  |
| <b>Cell Pathway</b>       | Nucleus membrane ; Multi-pass membrane protein . Endoplasmic reticulum membrane ; Multi-pass membrane protein . Sarcoplasmic reticulum membrane ; Multi-pass membrane protein .  |
| <b>Tissue Specificity</b> | Found in most tissues. Most abundant in thymus, trachea, salivary gland, spleen, bone marrow, lymph node, peripheral leukocytes, pancreas and colon. Also detected in fetal tissues. Expressed in cell lineages of hematopoietic, epithelial, or embryonic origin and also expressed in several cancer cell lines.   |
| <b>Function</b>           | alternative products:The same names have been attributed to different isoforms,catalytic activity:ATP + H(2)O + Ca(2+)(Cis) = ADP + phosphate + Ca(2+)(Trans).,function:This magnesium-dependent enzyme catalyzes the hydrolysis of ATP coupled with the transport of calcium. Transports calcium ions from the cytosol into the sarcoplasmic/endoplasmic reticulum lumen. Contributes to calcium sequestration involved in muscular excitation/contraction.,similarity:Belongs to the cation transport ATPase (P-type) family. Type IIA subfamily.,tissue specificity:Found in most tissues. Most |

**Nanjing BYabscience technology Co.,Ltd**



abundant in thymus, trachea, salivary gland, spleen, bone marrow, lymph node, peripheral leukocytes, pancreas and colon. Also detected in fetal tissues.,

#### Background

This gene encodes one of the SERCA Ca(2+)-ATPases, which are intracellular pumps located in the sarcoplasmic or endoplasmic reticula of muscle cells. This enzyme catalyzes the hydrolysis of ATP coupled with the translocation of calcium from the cytosol to the sarcoplasmic reticulum lumen, and is involved in calcium sequestration associated with muscular excitation and contraction. Alternative splicing results in multiple transcript variants encoding different isoforms. [provided by RefSeq, Jul 2008],

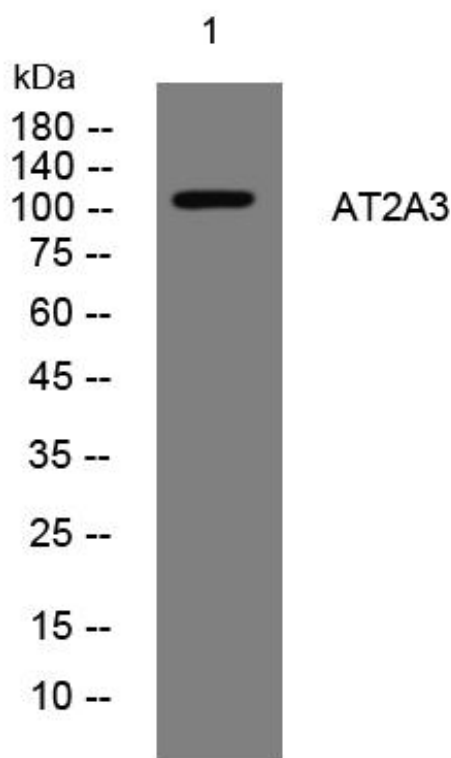
#### matters needing attention

Avoid repeated freezing and thawing!

#### Usage suggestions

This product can be used in immunological reaction related experiments. For more information, please consult technical personnel.

## Products Images



Western Blot analysis of various cells using AT2A3 mouse mAb