



## S22AG mouse mAb

Catalog No	BYmab-08564
Isotype	IgG
Reactivity	Human; Mouse
Applications	WB
Gene Name	SLC22A16 OCT6
Protein Name	S22AG
Immunogen	Synthesized peptide derived from human S22AG AA range: 49-99
Specificity	This antibody detects endogenous levels of S22AG at Human/Mouse
Formulation	Liquid in PBS containing 50% glycerol, 0.5% BSA and 0.02% sodium azide.
Source	Monoclonal, Mouse,IgG
Purification	The antibody was affinity-purified from mouse antiserum by affinity-chromatography using epitope-specific immunogen.
Dilution	WB 1:500-2000
Concentration	1 mg/ml
Purity	≥90%
Storage Stability	-20°C/1 year
Synonyms	
Observed Band	
Cell Pathway	Membrane ; Multi-pass membrane protein . Cell membrane . Detected in the plasma membrane of Sertoli cells and in the luminal membrane of epithelial cells in the epididymis.
Tissue Specificity	Widely expressed at low levels in adult tissues and fetal brain, lung, liver and kidney. Expressed in testis and epididymis (at protein level). Expressed at lower levels in bone marrow and fetal liver. Expressed in hematopoietic cells, including CD34(+) leukocytes and leukemia cells. Abundantly expressed in ovarian cancer clear-cell adenocarcinoma. Expressed in endometrium (at protein level); highly expressed during the normal secretory phase, but expression is significantly reduced in the proliferative phase.
Function	function:High affinity carnitine transporter; the uptake is partially sodium-ion dependent. Thought to mediate the L-carnitine secretion mechanism from testis epididymal epithelium into the lumen which is involved in the maturation of spermatozoa. Also transports organic cations such as tetraethylammonium (TEA) and doxorubicin. The uptake of TEA is inhibited by various organic cations. The

Nanjing BYabscience technology Co.,Ltd



uptake of doxorubicin is sodium-independent.,similarity:Belongs to the major facilitator superfamily. Organic cation transporter family.,subcellular location:Detected in the plasma mebrane of Sertoli cells and in the luminal membrane of epithelial cells in the epididymus.,tissue specificity:Widely expressed at low levels in adult tissues and fetal brain, lung, liver and kidney. Expressed in testis and epididymus (at protein level). Expressed at lower levels in bone marrow and fetal liver. Expressed in

#### Background

This gene encodes a member of the organic zwitterion transporter protein family which transports carnitine. The encoded protein has also been shown to transport anticancer drugs like bleomycin (PMID: 20037140) successful treatment has been correlated with the level of activity of this transporter in tumor cells. [provided by RefSeq, Dec 2011],

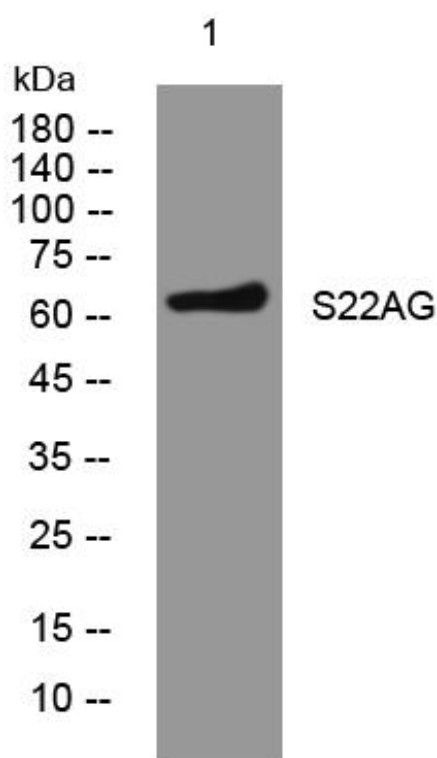
#### matters needing attention

Avoid repeated freezing and thawing!

#### Usage suggestions

This product can be used in immunological reaction related experiments. For more information, please consult technical personnel.

## Products Images



Western Blot analysis of various cells using S22AG mouse mAb