



DUS1L mouse mAb

Catalog No	BYmab-08555
Isotype	IgG
Reactivity	Human; Mouse;Rat
Applications	WB
Gene Name	DUS1L
Protein Name	DUS1L
Immunogen	Synthesized peptide derived from human DUS1L AA range: 262-312
Specificity	This antibody detects endogenous levels of DUS1L at Human/Mouse/Rat
Formulation	Liquid in PBS containing 50% glycerol, 0.5% BSA and 0.02% sodium azide.
Source	Monoclonal, Mouse,IgG
Purification	The antibody was affinity-purified from mouse antiserum by affinity-chromatography using epitope-specific immunogen.
Dilution	WB 1:500-2000
Concentration	1 mg/ml
Purity	≥90%
Storage Stability	-20°C/1 year
Synonyms	
Observed Band	
Cell Pathway	cytosol,
Tissue Specificity	
Function	cofactor:FAD.,function:Catalyzes the synthesis of dihydrouridine, a modified base found in the D-loop of most tRNAs.,similarity:Belongs to the dus family. Dus1 subfamily.,
Background	
matters needing attention	Avoid repeated freezing and thawing!

Nanjing BYabscience technology Co.,Ltd

网址: www.njbybio.com

官方热线: 025-5229-8998

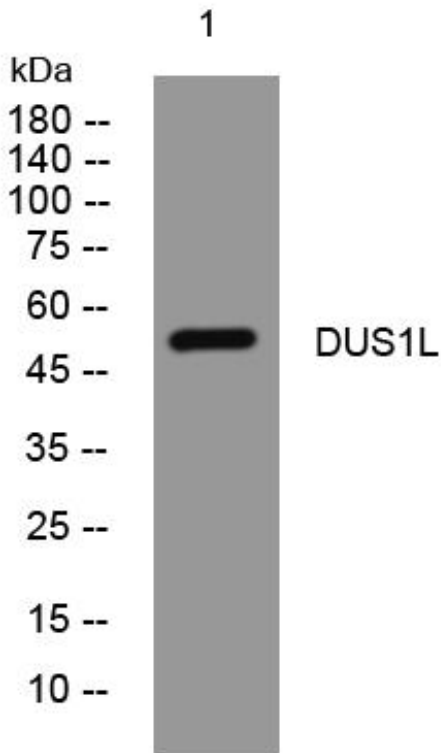
监督电话: 15950492658



Usage suggestions

This product can be used in immunological reaction related experiments. For more information, please consult technical personnel.

Products Images



Western Blot analysis of various cells using DUS1L mouse mAb

Nanjing BYabs science technology Co.,Ltd

网址: www.njbybio.com

官方热线: 025-5229-8998

监督电话: 15950492658