



NAT14 mouse mAb

Catalog No	BYmab-08554
Isotype	IgG
Reactivity	Human; Mouse
Applications	WB
Gene Name	NAT14 KLP1
Protein Name	NAT14
Immunogen	Synthesized peptide derived from human NAT14 AA range: 96-146
Specificity	This antibody detects endogenous levels of NAT14 at Human/Mouse
Formulation	Liquid in PBS containing 50% glycerol, 0.5% BSA and 0.02% sodium azide.
Source	Monoclonal, Mouse,IgG
Purification	The antibody was affinity-purified from mouse antiserum by affinity-chromatography using epitope-specific immunogen.
Dilution	WB 1:500-2000
Concentration	1 mg/ml
Purity	≥90%
Storage Stability	-20°C/1 year
Synonyms	
Observed Band	
Cell Pathway	Membrane ; Single-pass membrane protein .
Tissue Specificity	Expressed in K-562 and HeLa cell lines and in brain.
Function	function:Probable acetyltransferase that binds the 5'-GGACTACAG-3' sequence of coproporphyrinogen oxidase promoter. Able to activate transcription of a reporter construct in vitro.,similarity:Belongs to the camello family.,similarity:Contains 1 N-acetyltransferase domain.,tissue specificity:Expressed in K562 cells, HeLa cells and brain.,
Background	
matters needing attention	Avoid repeated freezing and thawing!

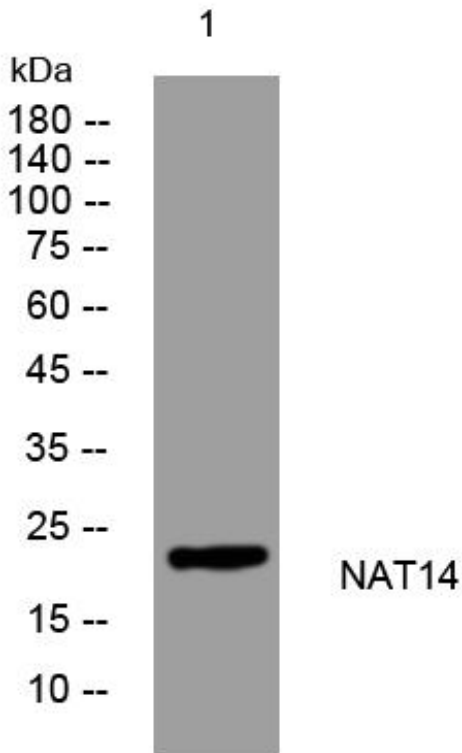
Nanjing BYabscience technology Co.,Ltd



Usage suggestions

This product can be used in immunological reaction related experiments. For more information, please consult technical personnel.

Products Images



Western Blot analysis of various cells using NAT14 mouse mAb

Nanjing BYabscience technology Co.,Ltd

网址: www.njbybio.com

官方热线: 025-5229-8998

监督电话: 15950492658