



AP1M2 mouse mAb

Catalog No	BYmab-08553
Isotype	IgG
Reactivity	Human; Mouse
Applications	WB
Gene Name	AP1M2
Protein Name	AP1M2
Immunogen	Synthesized peptide derived from human AP1M2 AA range: 117-167
Specificity	This antibody detects endogenous levels of AP1M2 at Human/Mouse
Formulation	Liquid in PBS containing 50% glycerol, 0.5% BSA and 0.02% sodium azide.
Source	Monoclonal, Mouse,IgG
Purification	The antibody was affinity-purified from mouse antiserum by affinity-chromatography using epitope-specific immunogen.
Dilution	WB 1:500-2000
Concentration	1 mg/ml
Purity	≥90%
Storage Stability	-20°C/1 year
Synonyms	
Observed Band	
Cell Pathway	Golgi apparatus. Cytoplasmic vesicle, clathrin-coated vesicle membrane; Peripheral membrane protein; Cytoplasmic side. Component of the coat surrounding the cytoplasmic face of coated vesicles located at the Golgi complex.
Tissue Specificity	
Function	function:Subunit of clathrin-associated adaptor protein complex 1 that plays a role in protein sorting in the trans-Golgi network (TGN) and endosomes. The AP complexes mediate the recruitment of clathrin to membranes and the recognition of sorting signals within the cytosolic tails of transmembrane cargo molecules.,PTM:Phosphorylation of membrane-bound AP1M1/AP1M2 increases its affinity for sorting signals.,similarity:Belongs to the adaptor complexes medium subunit family.,similarity:Contains 1 MHD (mu homology) domain.,subcellular location:Component of the coat surrounding the cytoplasmic face of coated vesicles located at the Golgi complex.,subunit:Adaptor protein complex 1 (AP-1) is an heterotetramer composed of two large adaptins (gamma-type subunit AP1G1 and beta-type subunit AP1B1), a medium adaptin (mu-type subunit

Nanjing BYabscience technology Co.,Ltd



AP1M1 or AP1M2) and a small adaptin (sigma-type subunit AP1S1 or A

Background

This gene encodes a subunit of the heterotetrameric adaptor-related protein complex 1 (AP-1), which belongs to the adaptor complexes medium subunits family. This protein is caMABLE of interacting with tyrosine-based sorting signals. Alternative splicing results in multiple transcript variants. [provided by RefSeq, Jul 2014],

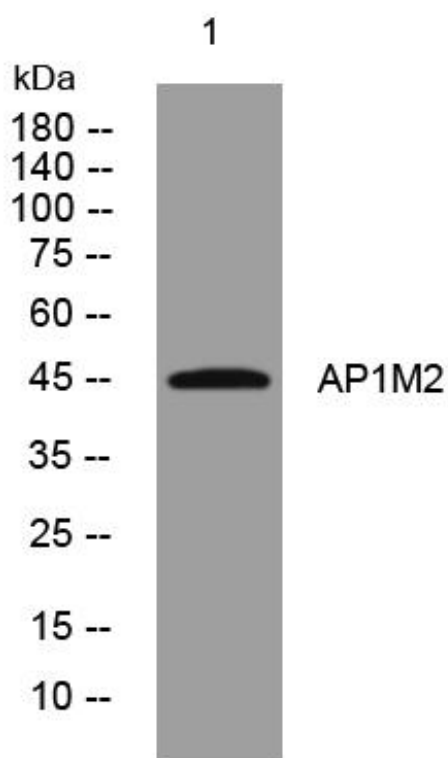
matters needing attention

Avoid repeated freezing and thawing!

Usage suggestions

This product can be used in immunological reaction related experiments. For more information, please consult technical personnel.

Products Images



Western Blot analysis of various cells using AP1M2 mouse mAb

Nanjing BYabscience technology Co.,Ltd

网址: www.njbybio.com

官方热线: 025-5229-8998

监督电话: 15950492658