



## SSX6 mouse mAb

<b>Catalog No</b>	BYmab-08552
<b>Isotype</b>	IgG
<b>Reactivity</b>	Human;Rat;Mouse;
<b>Applications</b>	WB
<b>Gene Name</b>	SSX6
<b>Protein Name</b>	SSX6
<b>Immunogen</b>	Synthesized peptide derived from human SSX6 AA range: 119-169
<b>Specificity</b>	This antibody detects endogenous levels of SSX6 at Human
<b>Formulation</b>	Liquid in PBS containing 50% glycerol, 0.5% BSA and 0.02% sodium azide.
<b>Source</b>	Monoclonal, Mouse,IgG
<b>Purification</b>	The antibody was affinity-purified from mouse antiserum by affinity-chromatography using epitope-specific immunogen.
<b>Dilution</b>	WB 1:500-2000
<b>Concentration</b>	1 mg/ml
<b>Purity</b>	≥90%
<b>Storage Stability</b>	-20°C/1 year
<b>Synonyms</b>	
<b>Observed Band</b>	
<b>Cell Pathway</b>	nucleus,
<b>Tissue Specificity</b>	Not detected in any normal tissues. Expressed in a melanoma cell line.
<b>Function</b>	function:Could act as a modulator of transcription.,similarity:Belongs to the SSX family.,similarity:Contains 1 KRAB-related domain.,tissue specificity:Not detected in any normal tissues. Expressed in a melanoma cell line.,
<b>Background</b>	This gene belongs to the family of highly homologous synovial sarcoma X (SSX) breakpoint proteins. These proteins may function as transcriptional repressors. They are also caMABLE of eliciting spontaneously humoral and cellular immune responses in cancer patients, and are potentially useful targets in cancer vaccine-based immunotherapy. SSX1, SSX2 and SSX4 genes have been involved in the t(X;18) translocation characteristically found in all synovial sarcomas. This gene is classified as a pseudogene because a splice donor in the 3'UTR has changed compared to other family members, rendering the

**Nanjing BYabscience technology Co.,Ltd**



transcript a candidate for nonsense-mediated mRNA decay (NMD). [provided by RefSeq, Aug 2009],

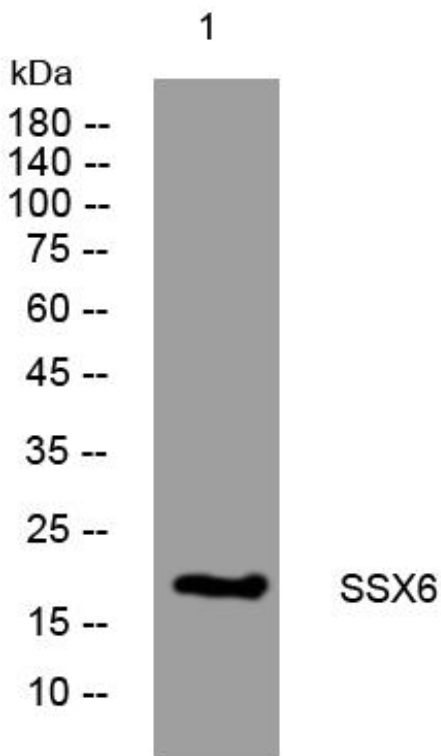
**matters needing attention**

Avoid repeated freezing and thawing!

**Usage suggestions**

This product can be used in immunological reaction related experiments. For more information, please consult technical personnel.

## Products Images



Western Blot analysis of various cells using SSX6 mouse mAb