



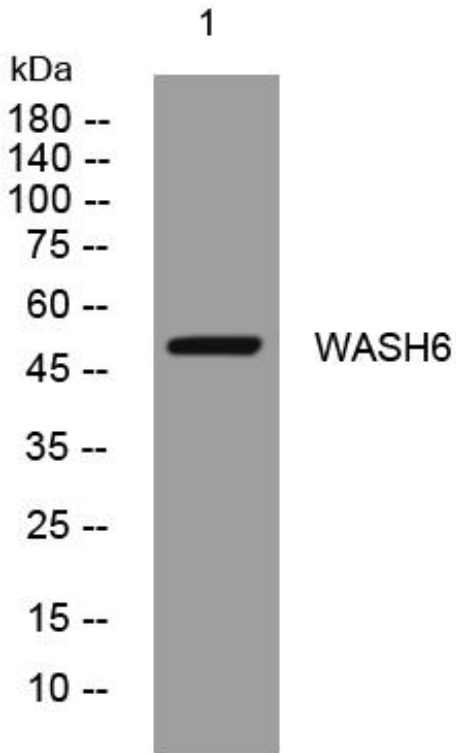
WASH6 mouse mAb

Catalog No	BYmab-08541
Isotype	IgG
Reactivity	Human;Rat;Mouse;
Applications	WB
Gene Name	WASH6P CXYorf1 FAM39A
Protein Name	WASH6
Immunogen	Synthesized peptide derived from human WASH6 AA range: 181-231
Specificity	This antibody detects endogenous levels of WASH6 at Human
Formulation	Liquid in PBS containing 50% glycerol, 0.5% BSA and 0.02% sodium azide.
Source	Monoclonal, Mouse,IgG
Purification	The antibody was affinity-purified from mouse antiserum by affinity-chromatography using epitope-specific immunogen.
Dilution	WB 1:500-2000
Concentration	1 mg/ml
Purity	≥90%
Storage Stability	-20°C/1 year
Synonyms	
Observed Band	
Cell Pathway	Early endosome membrane . Recycling endosome membrane . Localization to the endosome membrane is mediated via its interaction with WASHC2. .
Tissue Specificity	
Function	
Background	
matters needing attention	Avoid repeated freezing and thawing!
Usage suggestions	This product can be used in immunological reaction related experiments. For more information, please consult technical personnel.

Nanjing BYabscience technology Co.,Ltd



Products Images



Western Blot analysis of various cells using WASH6 mouse mAb