



# LLPH mouse mAb

Catalog No	BYmab-08535
Isotype	IgG
Reactivity	Human; Mouse
Applications	WB
Gene Name	LLPH C12orf31
Protein Name	LLPH
Immunogen	Synthesized peptide derived from human LLPH AA range: 18-68
Specificity	This antibody detects endogenous levels of LLPH at Human/Mouse
Formulation	Liquid in PBS containing 50% glycerol, 0.5% BSA and 0.02% sodium azide.
Source	Monoclonal, Mouse,IgG
Purification	The antibody was affinity-purified from mouse antiserum by affinity-chromatography using epitope-specific immunogen.
Dilution	WB 1:500-2000
Concentration	1 mg/ml
Purity	≥90%
Storage Stability	-20°C/1 year
Synonyms	
Observed Band	
Cell Pathway	Nucleus, nucleolus . Chromosome . Cell-permeable protein. 22 hours after injection in the hippocampal area CA1, internalized by most cells at the injection site (By similarity). Localizes at the chromosome periphery during mitosis (PubMed:20813266). .
Tissue Specificity	
Function	similarity:Belongs to the learning-associated protein family.,
Background	
matters needing attention	Avoid repeated freezing and thawing!

Nanjing BYabs science technology Co.,Ltd

网址: [www.njbybio.com](http://www.njbybio.com)

官方热线: 025-5229-8998

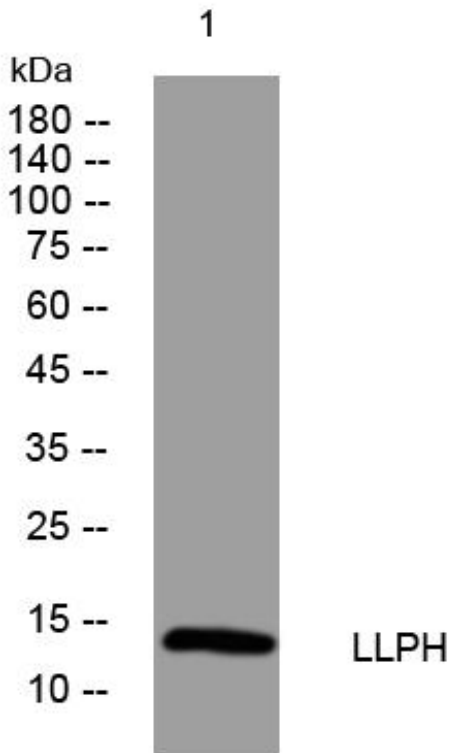
监督电话: 15950492658



### Usage suggestions

This product can be used in immunological reaction related experiments. For more information, please consult technical personnel.

## Products Images



Western Blot analysis of various cells using LLPH mouse mAb

Nanjing BYabs science technology Co.,Ltd

网址: [www.njbybio.com](http://www.njbybio.com)

官方热线: 025-5229-8998

监督电话: 15950492658