



SPE39 mouse mAb

Catalog No	BYmab-08534
Isotype	IgG
Reactivity	Human; Mouse;Rat
Applications	WB
Gene Name	VIPAS39 C14orf133 SPE39 VIPAR
Protein Name	SPE39
Immunogen	Synthesized peptide derived from human SPE39 AA range: 76-126
Specificity	This antibody detects endogenous levels of SPE39 at Human/Mouse/Rat
Formulation	Liquid in PBS containing 50% glycerol, 0.5% BSA and 0.02% sodium azide.
Source	Monoclonal, Mouse,IgG
Purification	The antibody was affinity-purified from mouse antiserum by affinity-chromatography using epitope-specific immunogen.
Dilution	WB 1:500-2000
Concentration	1 mg/ml
Purity	≥90%
Storage Stability	-20°C/1 year
Synonyms	
Observed Band	
Cell Pathway	Cytoplasm . Cytoplasmic vesicle . Early endosome . Recycling endosome . Late endosome . Colocalizes in clusters with VPS33B at cytoplasmic organelles (PubMed:19109425).
Tissue Specificity	
Function	
Background	This gene encodes a protein involved in the sorting of lysosomal proteins. Mutations in this gene are associated with ARCS2 (arthrogryposis, renal dysfunction, and cholestasis-2). Alternative splicing results in multiple transcript variants.[provided by RefSeq, Jul 2010],
matters needing attention	Avoid repeated freezing and thawing!

Nanjing BYabscience technology Co.,Ltd

网址: www.njbybio.com

官方热线: 025-5229-8998

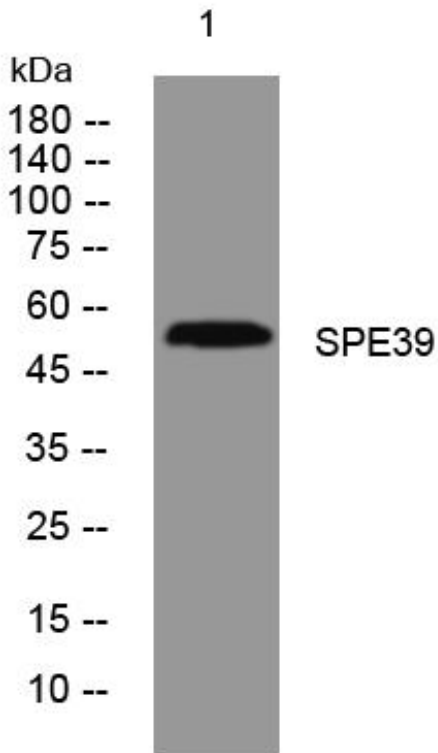
监督电话: 15950492658



Usage suggestions

This product can be used in immunological reaction related experiments. For more information, please consult technical personnel.

Products Images



Western Blot analysis of various cells using SPE39 mouse mAb

Nanjing BYabs science technology Co.,Ltd

网址: www.njbybio.com

官方热线: 025-5229-8998

监督电话: 15950492658