



BT2A2 mouse mAb

Catalog No	BYmab-08533
Isotype	IgG
Reactivity	Human; Mouse
Applications	WB
Gene Name	BTN2A2 BT2.2 BTF2
Protein Name	BT2A2
Immunogen	Synthesized peptide derived from human BT2A2 AA range: 325-375
Specificity	This antibody detects endogenous levels of BT2A2 at Human/Mouse
Formulation	Liquid in PBS containing 50% glycerol, 0.5% BSA and 0.02% sodium azide.
Source	Monoclonal, Mouse,IgG
Purification	The antibody was affinity-purified from mouse antiserum by affinity-chromatography using epitope-specific immunogen.
Dilution	WB 1:500-2000
Concentration	1 mg/ml
Purity	≥90%
Storage Stability	-20°C/1 year
Synonyms	
Observed Band	
Cell Pathway	Membrane ; Single-pass type I membrane protein .
Tissue Specificity	Highly expressed in brain, bone marrow, small intestine, muscle, spleen and pancreas. Moderate expression was seen in lung, liver and kidney.
Function	similarity:Belongs to the immunoglobulin superfamily. BTN/MOG family.,similarity:Contains 1 B30.2/SPRY domain.,similarity:Contains 1 Ig-like C2-type (immunoglobulin-like) domain.,similarity:Contains 1 Ig-like V-type (immunoglobulin-like) domain.,tissue specificity:Highly expressed in brain, bone marrow, small intestine, muscle, spleen and pancreas. Moderate expression was seen in lung, liver and kidney.,
Background	Butyrophilin is the major protein associated with fat droplets in the milk. This gene is a member of the BTN2 subfamily of genes, which encode proteins belonging to the butyrophilin protein family. The gene is located in a cluster on chromosome 6, consisting of seven genes belonging to the expanding B7/butyrophilin-like group, a subset of the immunoglobulin gene superfamily. The encoded protein is a type I

Nanjing BYabscience technology Co.,Ltd



receptor glycoprotein involved in lipid, fatty-acid and sterol metabolism. Several alternatively spliced transcript variants encoding different isoforms have been found for this gene. [provided by RefSeq, Oct 2010],

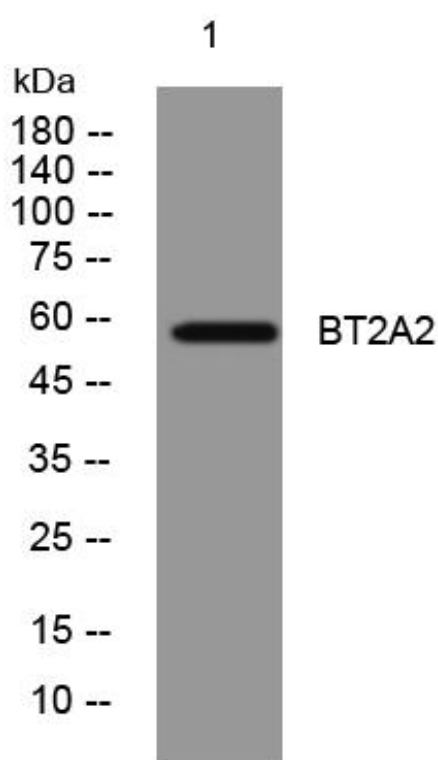
matters needing attention

Avoid repeated freezing and thawing!

Usage suggestions

This product can be used in immunological reaction related experiments. For more information, please consult technical personnel.

Products Images



Western Blot analysis of various cells using BT2A2 mouse mAb