



SPRR3 mouse mAb

Catalog No	BYmab-08528
Isotype	IgG
Reactivity	Human; Mouse
Applications	WB
Gene Name	SPRR3 SPRC
Protein Name	SPRR3
Immunogen	Synthesized peptide derived from human SPRR3 AA range: 23-73
Specificity	This antibody detects endogenous levels of SPRR3 at Human/Mouse
Formulation	Liquid in PBS containing 50% glycerol, 0.5% BSA and 0.02% sodium azide.
Source	Monoclonal, Mouse,IgG
Purification	The antibody was affinity-purified from mouse antiserum by affinity-chromatography using epitope-specific immunogen.
Dilution	WB 1:500-2000
Concentration	1 mg/ml
Purity	≥90%
Storage Stability	-20°C/1 year
Synonyms	
Observed Band	
Cell Pathway	Cytoplasm.
Tissue Specificity	
Function	function:Cross-linked envelope protein of keratinocytes.,induction:During squamous differentiation of epidermal keratinocytes.,similarity:Belongs to the cornifin (SPRR) family.,
Background	
matters needing attention	Avoid repeated freezing and thawing!

Nanjing BYabscience technology Co.,Ltd

网址: www.njbybio.com

官方热线: 025-5229-8998

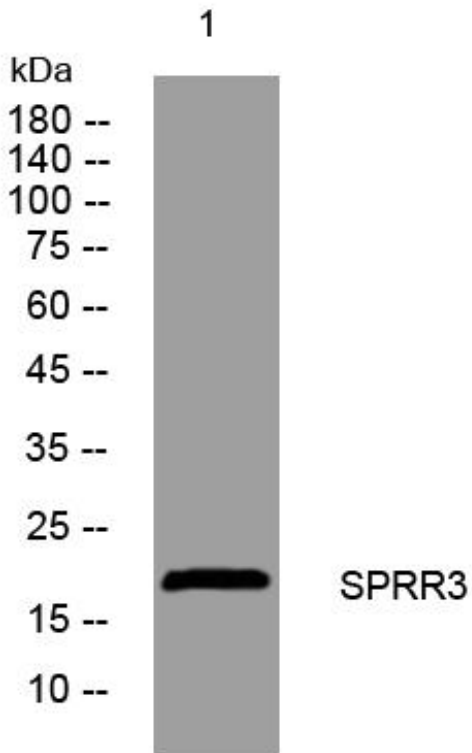
监督电话: 15950492658



Usage suggestions

This product can be used in immunological reaction related experiments. For more information, please consult technical personnel.

Products Images



Western Blot analysis of various cells using SPRR3 mouse mAb

Nanjing BYabs science technology Co.,Ltd

网址: www.njbybio.com

官方热线: 025-5229-8998

监督电话: 15950492658