



IMPCT mouse mAb

Catalog No	BYmab-08525
Isotype	IgG
Reactivity	Human; Mouse;Rat
Applications	WB
Gene Name	IMPACT
Protein Name	IMPCT
Immunogen	Synthesized peptide derived from human IMPCT AA range: 123-173
Specificity	This antibody detects endogenous levels of IMPCT at Human/Mouse/Rat
Formulation	Liquid in PBS containing 50% glycerol, 0.5% BSA and 0.02% sodium azide.
Source	Monoclonal, Mouse,IgG
Purification	The antibody was affinity-purified from mouse antiserum by affinity-chromatography using epitope-specific immunogen.
Dilution	WB 1:500-2000
Concentration	1 mg/ml
Purity	≥90%
Storage Stability	-20°C/1 year
Synonyms	
Observed Band	
Cell Pathway	Cytoplasm .
Tissue Specificity	Widely expressed. Expressed at high level in brain.
Function	function:Translational regulator that ensures constant high levels of translation under amino acid starvation. Acts by interacting with GCN1/GCN1L1, thereby preventing activation of GCN2 protein kinases (EIF2AK1 to 4) and subsequent down-regulation of protein synthesis.,miscellaneous:In contrast to the mouse or Mouse ortholog, the IMPACT locus is not imprinted in human.,similarity:Belongs to the IMPACT family.,similarity:Contains 1 RWD domain.,subunit:Interacts with GCN1/GCN1L1.,tissue specificity:Widely expressed. Expressed at high level in brain.,
Background	

Nanjing BYabscience technology Co.,Ltd

网址: www.njbybio.com

官方热线: 025-5229-8998

监督电话: 15950492658



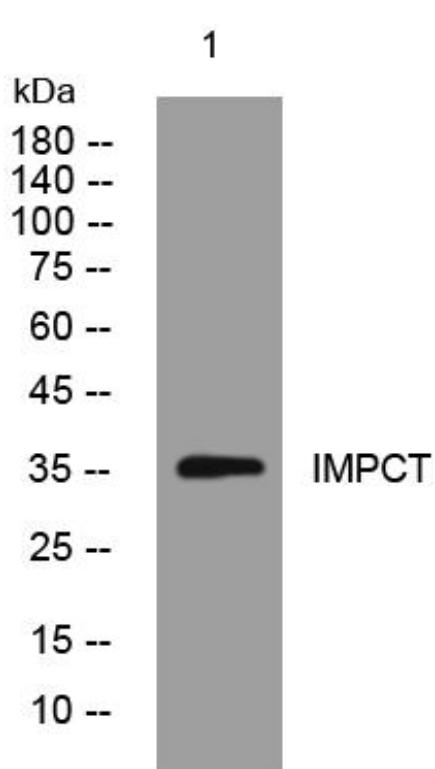
matters needing attention

Avoid repeated freezing and thawing!

Usage suggestions

This product can be used in immunological reaction related experiments. For more information, please consult technical personnel.

Products Images



Western Blot analysis of various cells using IMPCT mouse mAb