



S6OS1 mouse mAb

Catalog No	BYmab-08522
Isotype	IgG
Reactivity	Human; Mouse
Applications	WB
Gene Name	SIX6OS1 C14orf39
Protein Name	S6OS1
Immunogen	Synthesized peptide derived from human S6OS1 AA range: 511-561
Specificity	This antibody detects endogenous levels of S6OS1 at Human/Mouse
Formulation	Liquid in PBS containing 50% glycerol, 0.5% BSA and 0.02% sodium azide.
Source	Monoclonal, Mouse,IgG
Purification	The antibody was affinity-purified from mouse antiserum by affinity-chromatography using epitope-specific immunogen.
Dilution	WB 1:500-2000
Concentration	1 mg/ml
Purity	≥90%
Storage Stability	-20°C/1 year
Synonyms	
Observed Band	
Cell Pathway	Chromosome . Component of the central element of the synaptonemal complex. In spermatocytes, detected from zygonema to pachynema and localizes along synapsed lateral elements. Loading to the central element of the synaptonemal complex is dependent on the assembly of the tripartite synaptonemal complex structure that occurs upon synapsis between homologous chromosomes. .
Tissue Specificity	Highest expression in retina, skeletal muscle, testis and colon.
Function	function:May be involved in eye development through regulation of the SIX6 transcription factor.,tissue specificity:Highest expression in retina, skeletal muscle and colon.,
Background	
matters needing attention	Avoid repeated freezing and thawing!

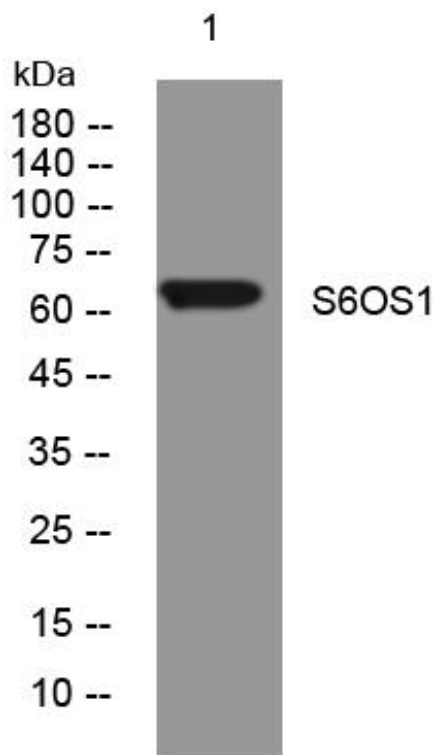
Nanjing BYabscience technology Co.,Ltd



Usage suggestions

This product can be used in immunological reaction related experiments. For more information, please consult technical personnel.

Products Images



Western Blot analysis of various cells using S6OS1 mouse mAb

Nanjing BYabs science technology Co.,Ltd

网址: www.njbybio.com

官方热线: 025-5229-8998

监督电话: 15950492658