



ORML1 mouse mAb

| | |
|--------------------|---|
| Catalog No | BYmab-08521 |
| Isotype | IgG |
| Reactivity | Human; Mouse |
| Applications | WB |
| Gene Name | ORMDL1 HSPC202 |
| Protein Name | ORML1 |
| Immunogen | Synthesized peptide derived from human ORML1 AA range: 22-72 |
| Specificity | This antibody detects endogenous levels of ORML1 at Human/Mouse |
| Formulation | Liquid in PBS containing 50% glycerol, 0.5% BSA and 0.02% sodium azide. |
| Source | Monoclonal, Mouse,IgG |
| Purification | The antibody was affinity-purified from mouse antiserum by affinity-chromatography using epitope-specific immunogen. |
| Dilution | WB 1:500-2000 |
| Concentration | 1 mg/ml |
| Purity | ≥90% |
| Storage Stability | -20°C/1 year |
| Synonyms | |
| Observed Band | |
| Cell Pathway | Endoplasmic reticulum membrane ; Multi-pass membrane protein . |
| Tissue Specificity | Widely expressed. Expressed in adult and fetal heart, brain, lung, liver, skeletal muscle and kidney. Expressed in adult pancreas and placenta and in fetal spleen abd thymus. Expressed at intermediate level in pancreas, placenta and brain but low in skeletal muscle and lung. |
| Function | similarity:Belongs to the ORM family.,tissue specificity:Widely expressed. Expressed in adult and fetal heart, brain, lung, liver, skeletal muscle and kidney. Expressed in adult pancreas and placenta and in fetal spleen abd thymus. Expressed at intermediate level in pancreas, placenta and brain but low in skeletal muscle and lung., |
| Background | |

Nanjing BYabscience technology Co.,Ltd

网址: www.njbybio.com

官方热线: 025-5229-8998

监督电话: 15950492658



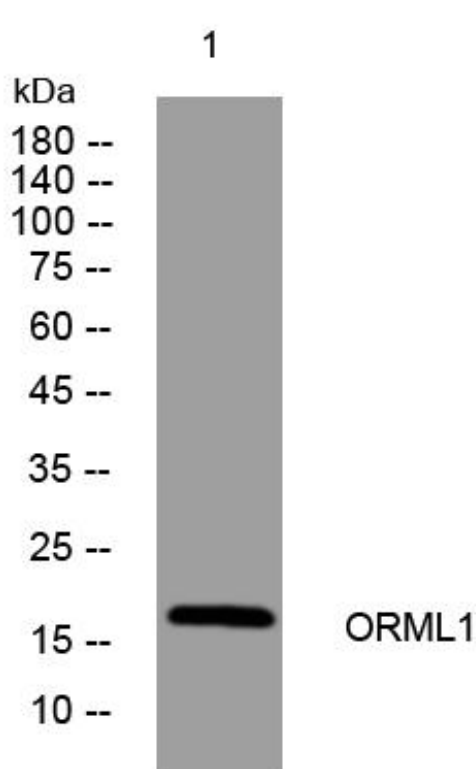
matters needing attention

Avoid repeated freezing and thawing!

Usage suggestions

This product can be used in immunological reaction related experiments. For more information, please consult technical personnel.

Products Images



Western Blot analysis of various cells using ORML1 mouse mAb