



CASQ1 mouse mAb

Catalog No	BYmab-08511
Isotype	IgG
Reactivity	Human; Mouse;Rat
Applications	WB
Gene Name	CASQ1 CASQ
Protein Name	CASQ1
Immunogen	Synthesized peptide derived from human CASQ1 AA range: 322-372
Specificity	This antibody detects endogenous levels of CASQ1 at Human/Mouse/Rat
Formulation	Liquid in PBS containing 50% glycerol, 0.5% BSA and 0.02% sodium azide.
Source	Monoclonal, Mouse,IgG
Purification	The antibody was affinity-purified from mouse antiserum by affinity-chromatography using epitope-specific immunogen.
Dilution	WB 1:500-2000
Concentration	1 mg/ml
Purity	≥90%
Storage Stability	-20°C/1 year
Synonyms	
Observed Band	
Cell Pathway	Endoplasmic reticulum . Sarcoplasmic reticulum . Sarcoplasmic reticulum lumen . Sarcoplasmic reticulum membrane; Peripheral membrane protein; Luminal side . Mitochondrion matrix . This isoform of calsequestrin occurs in the sarcoplasmic reticulum's terminal cisternae luminal spaces of fast skeletal muscle cells. Preferentially forms linear and round aggregates in the endoplasmic reticulum (ER) of resting cells (PubMed:28895244). In a minority of cells, homogeneously detected in the ER lumen (PubMed:28895244). Colocalizes with STIM1 at endoplasmic reticulum in response to a depletion of intracellular calcium (PubMed:27185316). .
Tissue Specificity	Expressed in myoblasts (at protein level).
Function	function:Calsequestrin is a high-capacity, moderate affinity, calcium-binding protein and thus acts as an internal calcium store in muscle. The release of calcium bound to calsequestrin through a calcium release channel triggers muscle contraction.,function:Calsequestrin is a high-capacity, moderate affinity, calcium-binding protein and thus acts as an internal calcium store in muscle. The

Nanjing BYabscience technology Co.,Ltd



release of calcium bound to calsequestrin through a calcium release channel triggers muscle contraction. Binds 40 to 50 moles of calcium. Also binds laminin.,online information:Calsequestrin entry,similarity:Belongs to the calsequestrin family.,subcellular location:This isoform of calsequestrin occurs in the sarcoplasmic reticulum's terminal cisternae luminal spaces of fast skeletal muscle cells. Also mitochondrial according to PubMed:7945294.,

Background

This gene encodes the skeletal muscle specific member of the calsequestrin protein family. Calsequestrin functions as a luminal sarcoplasmic reticulum calcium sensor in both cardiac and skeletal muscle cells. This protein, also known as calmitine, functions as a calcium regulator in the mitochondria of skeletal muscle. This protein is absent in patients with Duchenne and Becker types of muscular dystrophy. [provided by RefSeq, Jun 2013],

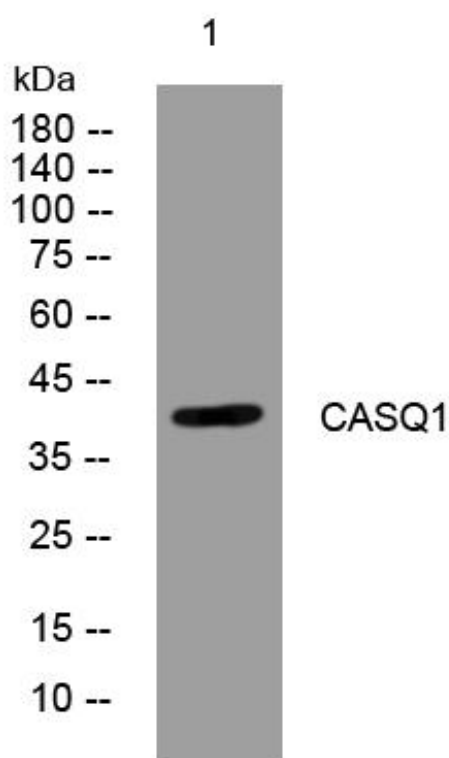
matters needing attention

Avoid repeated freezing and thawing!

Usage suggestions

This product can be used in immunological reaction related experiments. For more information, please consult technical personnel.

Products Images



Western Blot analysis of various cells using CASQ1 mouse mAb