



GSX1 mouse mAb

Catalog No	BYmab-08510
Isotype	IgG
Reactivity	Human; Mouse
Applications	WB
Gene Name	GSX1 GSH1
Protein Name	GSX1
Immunogen	Synthesized peptide derived from human GSX1 AA range: 131-181
Specificity	This antibody detects endogenous levels of GSX1 at Human/Mouse
Formulation	Liquid in PBS containing 50% glycerol, 0.5% BSA and 0.02% sodium azide.
Source	Monoclonal, Mouse,IgG
Purification	The antibody was affinity-purified from mouse antiserum by affinity-chromatography using epitope-specific immunogen.
Dilution	WB 1:500-2000
Concentration	1 mg/ml
Purity	≥90%
Storage Stability	-20°C/1 year
Synonyms	
Observed Band	
Cell Pathway	Nucleus .
Tissue Specificity	
Function	function:Probable transcription factor that binds to the DNA sequence 5'-GC[TA][AC]ATTA[GA]-3'. Activates the transcription of the GHRH gene. Plays an important role in pituitary development.,similarity:Belongs to the Antp homeobox family.,similarity:Contains 1 homeobox DNA-binding domain.,
Background	
matters needing attention	Avoid repeated freezing and thawing!

Nanjing BYabscience technology Co.,Ltd

网址: www.njbybio.com

官方热线: 025-5229-8998

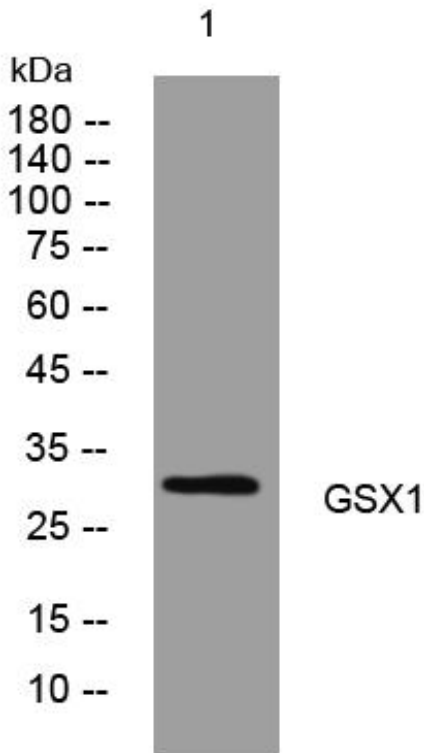
监督电话: 15950492658



Usage suggestions

This product can be used in immunological reaction related experiments. For more information, please consult technical personnel.

Products Images



Western Blot analysis of various cells using GSX1 mouse mAb

Nanjing BYabs science technology Co.,Ltd

网址: www.njbybio.com

官方热线: 025-5229-8998

监督电话: 15950492658