



TTBK1 mouse mAb

Catalog No	BYmab-08509
Isotype	IgG
Reactivity	Human; Mouse
Applications	WB
Gene Name	TTBK1 BDK KIAA1855
Protein Name	TTBK1
Immunogen	Synthesized peptide derived from human TTBK1 AA range: 429-479
Specificity	This antibody detects endogenous levels of TTBK1 at Human/Mouse
Formulation	Liquid in PBS containing 50% glycerol, 0.5% BSA and 0.02% sodium azide.
Source	Monoclonal, Mouse,IgG
Purification	The antibody was affinity-purified from mouse antiserum by affinity-chromatography using epitope-specific immunogen.
Dilution	WB 1:500-2000
Concentration	1 mg/ml
Purity	≥90%
Storage Stability	-20°C/1 year
Synonyms	
Observed Band	
Cell Pathway	Cytoplasm .
Tissue Specificity	Expressed in the brain, particularly in cortical and hippocampal neurons. Weakly expressed in spinal cord and testis. No expression in adipose tissue, bladder, cervix, colon, esophagus, heart, kidney, liver, lung, ovary, placenta, prostate, skeletal muscle, small intestine, spleen, testis, thymus, thyroid or trachea.
Function	catalytic activity:ATP + a protein = ADP + a phosphoprotein.,caution:It is uncertain whether Met-1 or Met-14 is the initiator.,cofactor:Divalent cations. Magnesium or, to a lesser extent, manganese, but not calcium or zinc.,function:Serine/threonine kinase which is able to phosphorylate TAU on serine, threonine and tyrosine residues. Induces aggregation of TAU.,similarity:Belongs to the protein kinase superfamily. CK1 Ser/Thr protein kinase family.,similarity:Contains 1 protein kinase domain.,tissue specificity:Expressed in the brain, particularly in cortical and hippocampal neurons. Weakly expressed in spinal cord and testis. No expression in adipose tissue, bladder, cervix, colon, esophagus, heart, kidney, liver, lung, ovary, placenta, prostate, skeletal muscle, small intestine, spleen,

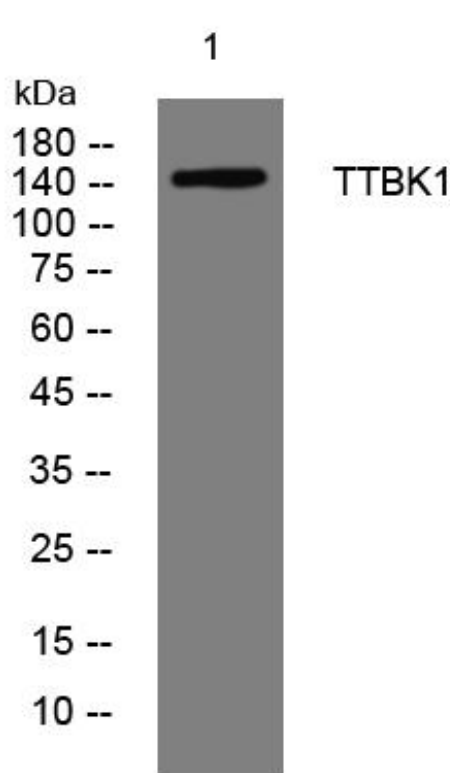
Nanjing BYabscience technology Co.,Ltd



testis, thymus, thyroid or trachea.,

Background	Summary:This gene belongs to the casein kinase 1 superfamily. The encoded protein is a neuron-specific, serine/threonine and tyrosine kinase, which regulates phosphorylation of tau, a protein that associates with microtubule assemblies and stabilizes them. Genetic variants in this gene are associated with Alzheimer's disease. [provided by RefSeq, Jul 2016],
matters needing attention	Avoid repeated freezing and thawing!
Usage suggestions	This product can be used in immunological reaction related experiments. For more information, please consult technical personnel.

Products Images



Nanjing BYabs science technology Co.,Ltd

网址: www.njbybio.com

官方热线: 025-5229-8998

监督电话: 15950492658