



S35G6 mouse mAb

Catalog No	BYmab-08506
Isotype	IgG
Reactivity	Human;Rat;Mouse;
Applications	WB
Gene Name	SLC35G6 AMAC1L3 TMEM21B
Protein Name	S35G6
Immunogen	Synthesized peptide derived from human S35G6 AA range: 286-336
Specificity	This antibody detects endogenous levels of S35G6 at Human
Formulation	Liquid in PBS containing 50% glycerol, 0.5% BSA and 0.02% sodium azide.
Source	Monoclonal, Mouse,IgG
Purification	The antibody was affinity-purified from mouse antiserum by affinity-chromatography using epitope-specific immunogen.
Dilution	WB 1:500-2000
Concentration	1 mg/ml
Purity	≥90%
Storage Stability	-20°C/1 year
Synonyms	
Observed Band	
Cell Pathway	Membrane ; Multi-pass membrane protein .
Tissue Specificity	Expressed in placenta and testis.
Function	miscellaneous:The gene encoding this protein appears to have arisen by SVA-mediated retrotransposition of the AMAC1L3 gene in the primate lineage.,miscellaneous:This gene appears to be the source locus of an SVA-mediated retrotransposition event that gave rise to AMAC1, AMAC1L1 and AMAC1L2 genes.,similarity:Contains 2 DUF6 domains.,tissue specificity:Expressed in placenta and testis.,tissue specificity:Expressed in testis.,
Background	
matters needing attention	Avoid repeated freezing and thawing!

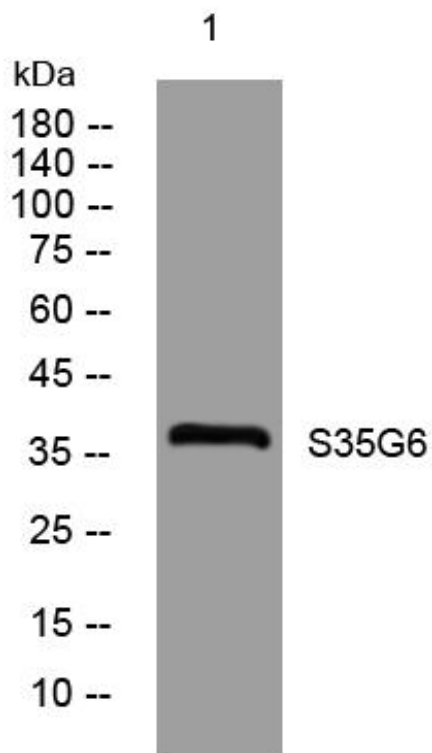
Nanjing BYabscience technology Co.,Ltd



Usage suggestions

This product can be used in immunological reaction related experiments. For more information, please consult technical personnel.

Products Images



Western Blot analysis of various cells using S35G6 mouse mAb

Nanjing BYabscience technology Co.,Ltd

网址: www.njbybio.com

官方热线: 025-5229-8998

监督电话: 15950492658