



ODF2L mouse mAb

Catalog No	BYmab-08499
Isotype	IgG
Reactivity	Human; Mouse
Applications	WB
Gene Name	ODF2L KIAA1229
Protein Name	ODF2L
Immunogen	Synthesized peptide derived from human ODF2L AA range: 226-276
Specificity	This antibody detects endogenous levels of ODF2L at Human/Mouse
Formulation	Liquid in PBS containing 50% glycerol, 0.5% BSA and 0.02% sodium azide.
Source	Monoclonal, Mouse,IgG
Purification	The antibody was affinity-purified from mouse antiserum by affinity-chromatography using epitope-specific immunogen.
Dilution	WB 1:500-2000
Concentration	1 mg/ml
Purity	≥90%
Storage Stability	-20°C/1 year
Synonyms	
Observed Band	
Cell Pathway	Cytoplasm, cytoskeleton, microtubule organizing center, centrosome . Cytoplasm, cytoskeleton, microtubule organizing center, centrosome, centriole . Cytoplasm, cytoskeleton, microtubule organizing center, centrosome, centriolar satellite . Cytoplasm, cytoskeleton, cilium basal body . Localizes to centrioles in proliferative cells and basal bodies in ciliated cells (PubMed:17485331). Disappears during ciliogenesis but reappears, albeit at a lower levels once ciliogenesis has completed (PubMed:28775150). .; [Isoform 1]: Cytoplasm, cytoskeleton, microtubule organizing center, centrosome, centriolar satellite . Not present in the centrioles in cycling cells. Disappears during ciliogenesis. .; [Isoform 6]: Cytoplasm, cytoskeleton, microtubule organizing center, centrosome, centriolar satellite
Tissue Specificity	Mainly expressed in trachea and testis. Not detected in bone marrow, bladder, leukocytes. Only weakly detected in tongue, stomach, brain and ovaries.
Function	caution:The sequence shown here is derived from an Ensembl automatic analysis pipeline and should be considered as preliminary data.,sequence

Nanjing BYabscience technology Co.,Ltd



caution:Contaminating sequence. Potential poly-A sequence.,sequence
caution:Translated as Glu.,similarity:Belongs to the ODF2 family.,

Background

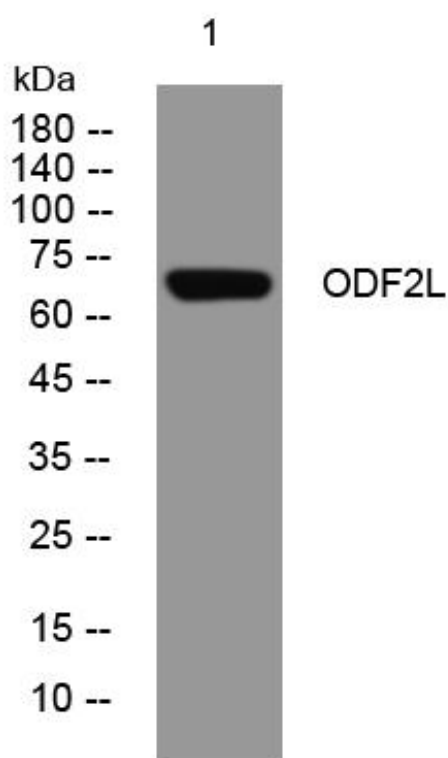
matters needing attention

Avoid repeated freezing and thawing!

Usage suggestions

This product can be used in immunological reaction related experiments. For more information, please consult technical personnel.

Products Images



Western Blot analysis of various cells using ODF2L mouse mAb

Nanjing BYabs science technology Co.,Ltd

网址: www.njbybio.com

官方热线: 025-5229-8998

监督电话: 15950492658