



HME2 mouse mAb

Catalog No	BYmab-08494
Isotype	IgG
Reactivity	Human; Mouse
Applications	WB
Gene Name	EN2
Protein Name	HME2
Immunogen	Synthesized peptide derived from human HME2 AA range: 225-275
Specificity	This antibody detects endogenous levels of HME2 at Human/Mouse
Formulation	Liquid in PBS containing 50% glycerol, 0.5% BSA and 0.02% sodium azide.
Source	Monoclonal, Mouse,IgG
Purification	The antibody was affinity-purified from mouse antiserum by affinity-chromatography using epitope-specific immunogen.
Dilution	WB 1:500-2000
Concentration	1 mg/ml
Purity	≥90%
Storage Stability	-20°C/1 year
Synonyms	
Observed Band	
Cell Pathway	Nucleus.
Tissue Specificity	
Function	disease:Genetic variations in EN2 may be associated with susceptibility to autism type 10 (AUTS10) [MIM:611016]. Autism is a neurodevelopmental disorder characterized by disturbance in language, perception and socialization. The disorder is classically defined by a triad of limited or absent verbal communication, a lack of reciprocal social interaction or responsiveness, and restricted, stereotypical and ritualized patterns of interests and behavior.,similarity:Belongs to the engrailed homeobox family.,similarity:Contains 1 homeobox DNA-binding domain.,
Background	Homeobox-containing genes are thought to have a role in controlling development. In Drosophila, the ‘engrailed’ (en) gene plays an important role during development in segmentation, where it is required for the

Nanjing BYabscience technology Co.,Ltd



formation of posterior compartments. Different mutations in the mouse homologs, En1 and En2, produced different developmental defects that frequently are lethal. The human engrailed homologs 1 and 2 encode homeodomain-containing proteins and have been implicated in the control of pattern formation during development of the central nervous system. [provided by RefSeq, Jul 2008],

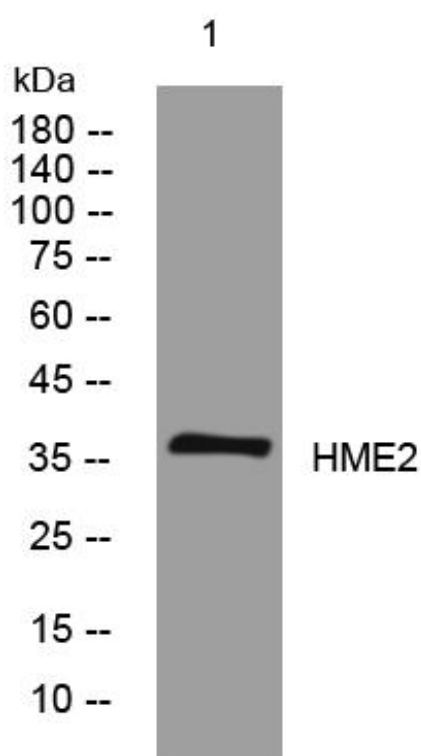
matters needing attention

Avoid repeated freezing and thawing!

Usage suggestions

This product can be used in immunological reaction related experiments. For more information, please consult technical personnel.

Products Images



Western Blot analysis of various cells using HME2 mouse mAb