



ZFP1 mouse mAb

Catalog No	BYmab-08492
Isotype	IgG
Reactivity	Human; Mouse
Applications	WB
Gene Name	ZFP1 ZNF475
Protein Name	ZFP1
Immunogen	Synthesized peptide derived from human ZFP1 AA range: 23-73
Specificity	This antibody detects endogenous levels of ZFP1 at Human/Mouse
Formulation	Liquid in PBS containing 50% glycerol, 0.5% BSA and 0.02% sodium azide.
Source	Monoclonal, Mouse,IgG
Purification	The antibody was affinity-purified from mouse antiserum by affinity-chromatography using epitope-specific immunogen.
Dilution	WB 1:500-2000
Concentration	1 mg/ml
Purity	≥90%
Storage Stability	-20°C/1 year
Synonyms	
Observed Band	
Cell Pathway	Nucleus . Shows widespread expression throughout the nucleus, but appears to be excluded from nucleoli. .
Tissue Specificity	
Function	function:May be involved in transcriptional regulation.,similarity:Belongs to the krueppel C2H2-type zinc-finger protein family.,similarity:Contains 1 KRAB domain.,similarity:Contains 8 C2H2-type zinc fingers.,
Background	This gene belongs to the zinc finger protein family. Some members of this family bind to DNA by zinc-mediated secondary structures called zinc fingers, and are involved in transcriptional regulation. Alternative splicing results in multiple transcript variants encoding different isoforms. [provided by RefSeq, Jan 2016],
matters needing attention	Avoid repeated freezing and thawing!

Nanjing BYabscience technology Co.,Ltd

网址: www.njbybio.com

官方热线: 025-5229-8998

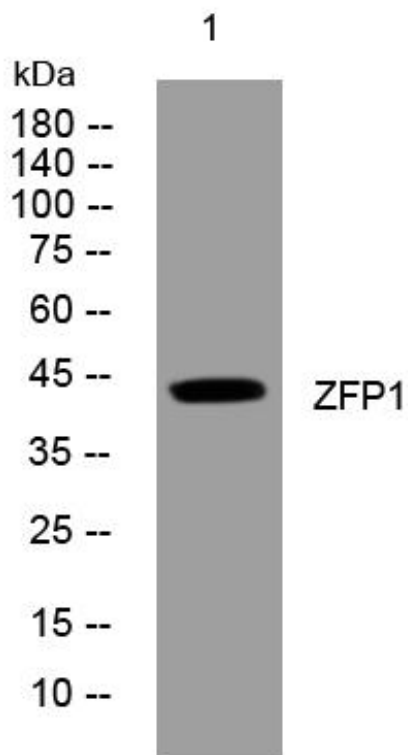
监督电话: 15950492658



Usage suggestions

This product can be used in immunological reaction related experiments. For more information, please consult technical personnel.

Products Images



Western Blot analysis of various cells using ZFP1 mouse mAb

Nanjing BYabs science technology Co.,Ltd

网址: www.njbybio.com

官方热线: 025-5229-8998

监督电话: 15950492658