



DOC10 mouse mAb

Catalog No	BYmab-08491
Isotype	IgG
Reactivity	Human; Mouse
Applications	WB
Gene Name	DOCK10 KIAA0694 ZIZ3
Protein Name	DOC10
Immunogen	Synthesized peptide derived from human DOC10 AA range: 2051-2101
Specificity	This antibody detects endogenous levels of DOC10 at Human/Mouse
Formulation	Liquid in PBS containing 50% glycerol, 0.5% BSA and 0.02% sodium azide.
Source	Monoclonal, Mouse,IgG
Purification	The antibody was affinity-purified from mouse antiserum by affinity-chromatography using epitope-specific immunogen.
Dilution	WB 1:500-2000
Concentration	1 mg/ml
Purity	≥90%
Storage Stability	-20°C/1 year
Synonyms	
Observed Band	
Cell Pathway	Nucleus . Cytoplasm . Cell projection, dendritic spine .
Tissue Specificity	Expressed at low level in brain and lung. Isoform 1 is enriched in normal T-cells, isoform 3 is enriched in normal B-cells and chronic lymphocytic leukemia (CLL) B-cells.
Function	domain:The DHR-2 domain may mediate some GEF activity.,function:Potential guanine nucleotide exchange factor (GEF). GEF proteins activate some small GTPases by exchanging bound GDP for free GTP.,similarity:Belongs to the DOCK family.,similarity:Contains 1 DHR-1 (CZH-1) domain.,similarity:Contains 1 DHR-2 (CZH-2) domain.,similarity:Contains 1 PH domain.,tissue specificity:Expressed at low level in brain and lung.,
Background	This gene encodes a member of the dedicator of cytokinesis protein family. Members of this family are guanosine nucleotide exchange factors for Rho GTPases and defined by the presence of conserved DOCK-homology regions. The encoded protein belongs to the D (or Zizimin) subfamily of DOCK proteins,

Nanjing BYabscience technology Co.,Ltd



which also contain an N-terminal pleckstrin homology domain. Alternatively spliced transcript variants that encode different isoforms have been described. [provided by RefSeq, Mar 2014],

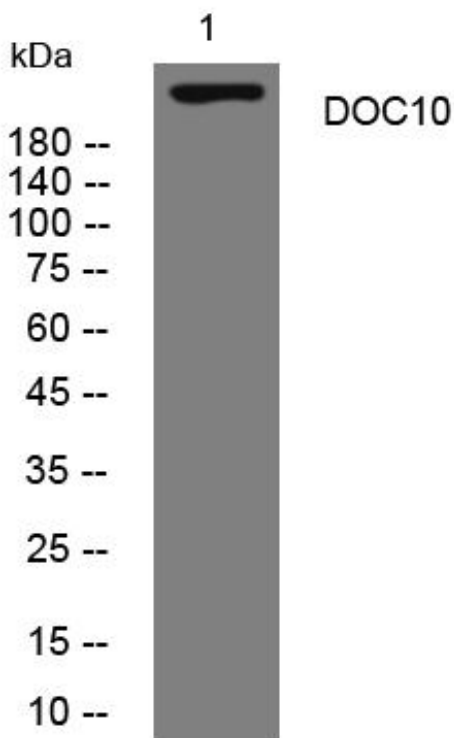
matters needing attention

Avoid repeated freezing and thawing!

Usage suggestions

This product can be used in immunological reaction related experiments. For more information, please consult technical personnel.

Products Images



Western Blot analysis of various cells using DOC10 mouse mAb