



# CE025 mouse mAb

Catalog No	BYmab-08488
Isotype	IgG
Reactivity	Human;Rat;Mouse;
Applications	WB
Gene Name	C5orf25
Protein Name	CE025
Immunogen	Synthesized peptide derived from human CE025 AA range: 369-419
Specificity	This antibody detects endogenous levels of CE025 at Human
Formulation	Liquid in PBS containing 50% glycerol, 0.5% BSA and 0.02% sodium azide.
Source	Monoclonal, Mouse,IgG
Purification	The antibody was affinity-purified from mouse antiserum by affinity-chromatography using epitope-specific immunogen.
Dilution	WB 1:500-2000
Concentration	1 mg/ml
Purity	≥90%
Storage Stability	-20°C/1 year
Synonyms	
Observed Band	
Cell Pathway	[Isoform 5]: Cytoplasm . Cytoplasm, myofibril, sarcomere .
Tissue Specificity	[Isoform 5]: Skeletal muscle.
Function	PTM:Phosphorylated upon DNA damage, probably by ATM or ATR.,
Background	
matters needing attention	Avoid repeated freezing and thawing!
Usage suggestions	This product can be used in immunological reaction related experiments. For more information, please consult technical personnel.

Nanjing BYabscience technology Co.,Ltd

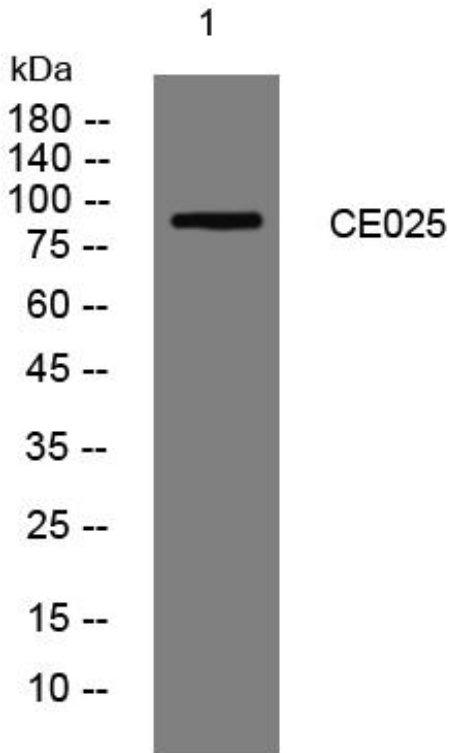
网址: [www.njbybio.com](http://www.njbybio.com)

官方热线: 025-5229-8998

监督电话: 15950492658



## Products Images



Western Blot analysis of various cells using CE025 mouse mAb