



S2546 mouse mAb

Catalog No	BYmab-08484
Isotype	IgG
Reactivity	Human; Mouse;Rat
Applications	WB
Gene Name	SLC25A46 TB1
Protein Name	S2546
Immunogen	Synthesized peptide derived from human S2546 AA range: 322-372
Specificity	This antibody detects endogenous levels of S2546 at Human/Mouse/Rat
Formulation	Liquid in PBS containing 50% glycerol, 0.5% BSA and 0.02% sodium azide.
Source	Monoclonal, Mouse,IgG
Purification	The antibody was affinity-purified from mouse antiserum by affinity-chromatography using epitope-specific immunogen.
Dilution	WB 1:500-2000
Concentration	1 mg/ml
Purity	≥90%
Storage Stability	-20°C/1 year
Synonyms	
Observed Band	
Cell Pathway	Mitochondrion outer membrane ; Multi-pass membrane protein .
Tissue Specificity	
Function	similarity:Belongs to the mitochondrial carrier family.,similarity:Contains 2 Solcar repeats.,
Background	This gene encodes a mitochondrial solute carrier protein family member. It functions in promoting mitochondrial fission, and prevents the formation of hyperfilamentous mitochondria. Mutation of this gene results in neuropathy and optic atrophy. [provided by RefSeq, Aug 2016],
matters needing attention	Avoid repeated freezing and thawing!

Nanjing BYabscience technology Co.,Ltd

网址: www.njbybio.com

官方热线: 025-5229-8998

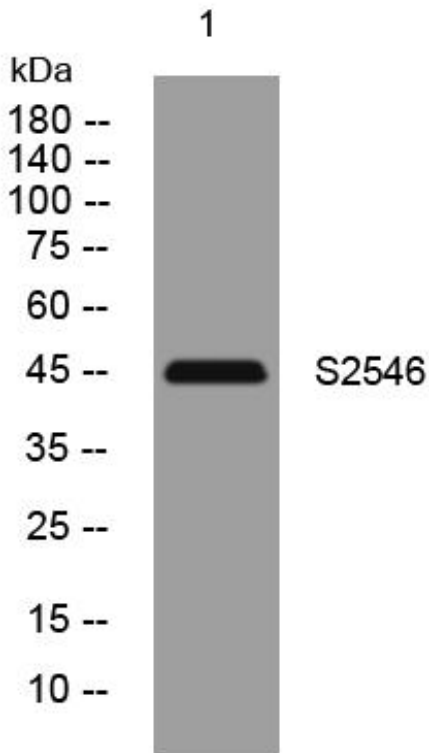
监督电话: 15950492658



Usage suggestions

This product can be used in immunological reaction related experiments. For more information, please consult technical personnel.

Products Images



Western Blot analysis of various cells using S2546 mouse mAb

Nanjing BYabs science technology Co.,Ltd

网址: www.njbybio.com

官方热线: 025-5229-8998

监督电话: 15950492658