



S2533 mouse mAb

Catalog No	BYmab-08470
Isotype	IgG
Reactivity	Human; Mouse
Applications	WB
Gene Name	SLC25A33
Protein Name	S2533
Immunogen	Synthesized peptide derived from human S2533 AA range: 209-259
Specificity	This antibody detects endogenous levels of S2533 at Human/Mouse
Formulation	Liquid in PBS containing 50% glycerol, 0.5% BSA and 0.02% sodium azide.
Source	Monoclonal, Mouse,IgG
Purification	The antibody was affinity-purified from mouse antiserum by affinity-chromatography using epitope-specific immunogen.
Dilution	WB 1:500-2000
Concentration	1 mg/ml
Purity	≥90%
Storage Stability	-20°C/1 year
Synonyms	
Observed Band	
Cell Pathway	Mitochondrion inner membrane ; Multi-pass membrane protein .
Tissue Specificity	Expressed in the central nervous system. Also expressed in testis and skeletal muscle. Weakly expressed in heart, liver, kidney, prostate, colon and peripheral blood leukocytes.
Function	function:Probable mitochondrial transporter which participates in dendritic cell endocytosis. May associate with mitochondrial oxidative phosphorylation.,similarity:Belongs to the mitochondrial carrier family.,similarity:Contains 3 Solcar repeats.,tissue specificity:Expressed in the central nervous system. Also expressed in testis and skeletal muscle. Weakly expressed in heart, liver, kidney, prostate, colon and peripheral blood leukocytes.,
Background	SLC25A33 belongs to the SLC25 family of mitochondrial carrier proteins (Haitina et al., 2006 [PubMed 16949250]).[supplied by OMIM, Mar 2008],

Nanjing BYabscience technology Co.,Ltd

网址: www.njbybio.com

官方热线: 025-5229-8998

监督电话: 15950492658



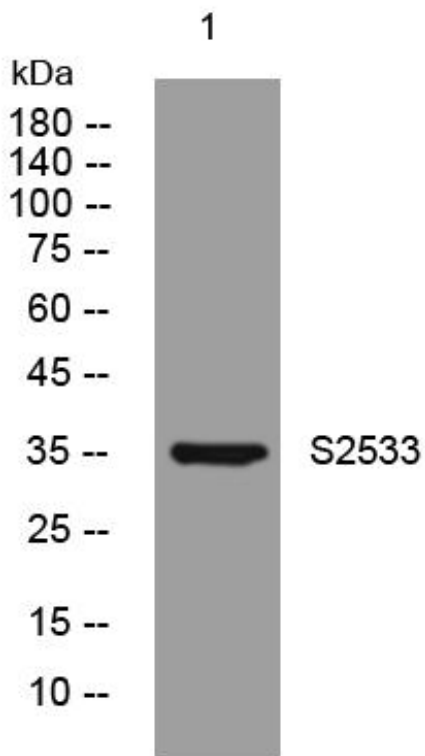
matters needing attention

Avoid repeated freezing and thawing!

Usage suggestions

This product can be used in immunological reaction related experiments. For more information, please consult technical personnel.

Products Images



Western Blot analysis of various cells using S2533 mouse mAb