



LUZP2 mouse mAb

Catalog No	BYmab-08466
Isotype	IgG
Reactivity	Human; Mouse
Applications	WB
Gene Name	LUZP2 UNQ2566/PRO6246
Protein Name	LUZP2
Immunogen	Synthesized peptide derived from human LUZP2 AA range: 135-185
Specificity	This antibody detects endogenous levels of LUZP2 at Human/Mouse
Formulation	Liquid in PBS containing 50% glycerol, 0.5% BSA and 0.02% sodium azide.
Source	Monoclonal, Mouse,IgG
Purification	The antibody was affinity-purified from mouse antiserum by affinity-chromatography using epitope-specific immunogen.
Dilution	WB 1:500-2000
Concentration	1 mg/ml
Purity	≥90%
Storage Stability	-20°C/1 year
Synonyms	
Observed Band	
Cell Pathway	Secreted .
Tissue Specificity	
Function	disease:Deletion of the LUZP2 gene may be a cause of Wilms tumor--aniridia--genitourinary anomalies--mental retardation syndrome (WAGR) [MIM:194072].,
Background	This gene encodes a leucine zipper protein. This protein is deleted in some patients with Wilms tumor-Aniridia-Genitourinary anomalies-mental Retardation (WAGR) syndrome. Alternate splicing results in multiple transcript variants. [provided by RefSeq, Oct 2011],
matters needing attention	Avoid repeated freezing and thawing!

Nanjing BYabscience technology Co.,Ltd

网址: www.njbybio.com

官方热线: 025-5229-8998

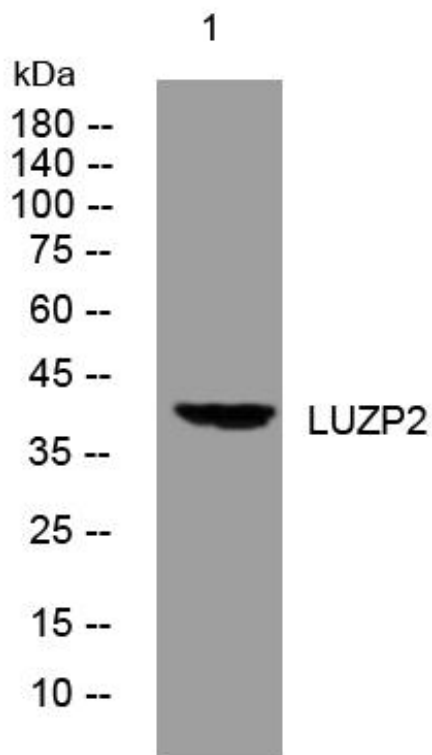
监督电话: 15950492658



Usage suggestions

This product can be used in immunological reaction related experiments. For more information, please consult technical personnel.

Products Images



Western Blot analysis of various cells using LUZP2 mouse mAb

Nanjing BYabs science technology Co.,Ltd

网址: www.njbybio.com

官方热线: 025-5229-8998

监督电话: 15950492658