



# DUS15 mouse mAb

<b>Catalog No</b>	BYmab-08465
<b>Isotype</b>	IgG
<b>Reactivity</b>	Human; Mouse
<b>Applications</b>	WB
<b>Gene Name</b>	DUSP15 C20orf57 VHY
<b>Protein Name</b>	DUS15
<b>Immunogen</b>	Synthesized peptide derived from human DUS15 AA range: 15-65
<b>Specificity</b>	This antibody detects endogenous levels of DUS15 at Human/Mouse
<b>Formulation</b>	Liquid in PBS containing 50% glycerol, 0.5% BSA and 0.02% sodium azide.
<b>Source</b>	Monoclonal, Mouse,IgG
<b>Purification</b>	The antibody was affinity-purified from mouse antiserum by affinity-chromatography using epitope-specific immunogen.
<b>Dilution</b>	WB 1:500-2000
<b>Concentration</b>	1 mg/ml
<b>Purity</b>	≥90%
<b>Storage Stability</b>	-20°C/1 year
<b>Synonyms</b>	
<b>Observed Band</b>	
<b>Cell Pathway</b>	Cytoplasm .; [Isoform 3]: Cell membrane; Lipid-anchor; Cytoplasmic side.
<b>Tissue Specificity</b>	Highly expressed in testis (PubMed:15138252). Expressed in brain; up-regulated in patients with multiple sclerosis gray matter lesions (PubMed:22792334).
<b>Function</b>	catalytic activity:A phosphoprotein + H(2)O = a protein + phosphate.,catalytic activity:Protein tyrosine phosphate + H(2)O = protein tyrosine + phosphate.,caution:Although assigned as two separate genes (c20orf57 and DUSP15), it is probable that C20orf57 does not exist by itself and is a part of the DUSP15 gene.,PTM:Isoform 3 is N-myristoylated.,similarity:Belongs to the protein-tyrosine phosphatase family. Non-receptor class dual specificity subfamily.,similarity:Contains 1 tyrosine-protein phosphatase domain.,tissue specificity:Highly expressed in testis.,
<b>Background</b>	The protein encoded by this gene has both protein-tyrosine phosphatase activity and serine/threonine-specific phosphatase activity, and therefore is known as a dual specificity phosphatase. This protein may function in the differentiation of

**Nanjing BYabscience technology Co.,Ltd**



oligodendrocytes. Alternative splicing results in multiple transcript variants.  
[provided by RefSeq, Feb 2016],

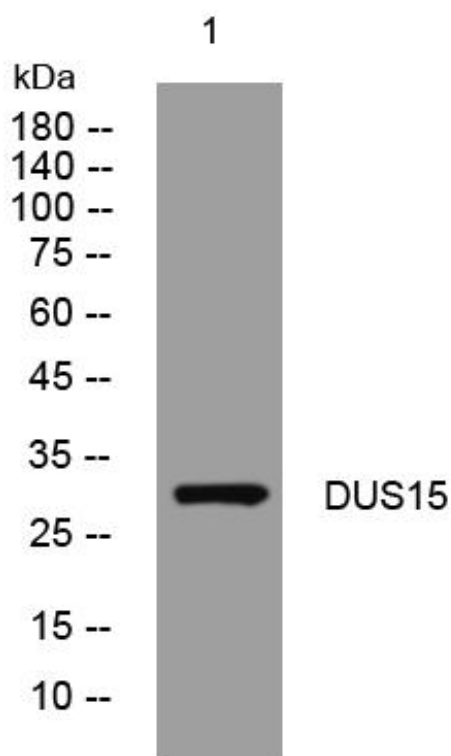
**matters needing attention**

Avoid repeated freezing and thawing!

**Usage suggestions**

This product can be used in immunological reaction related experiments. For more information, please consult technical personnel.

## Products Images



Western Blot analysis of various cells using DUS15 mouse mAb