



MSMP mouse mAb

Catalog No	BYmab-08463
Isotype	IgG
Reactivity	Human; Mouse
Applications	WB
Gene Name	MSMP PSMP
Protein Name	MSMP
Immunogen	Synthesized peptide derived from human MSMP AA range: 58-108
Specificity	This antibody detects endogenous levels of MSMP at Human/Mouse
Formulation	Liquid in PBS containing 50% glycerol, 0.5% BSA and 0.02% sodium azide.
Source	Monoclonal, Mouse,IgG
Purification	The antibody was affinity-purified from mouse antiserum by affinity-chromatography using epitope-specific immunogen.
Dilution	WB 1:500-2000
Concentration	1 mg/ml
Purity	≥90%
Storage Stability	-20°C/1 year
Synonyms	
Observed Band	
Cell Pathway	Secreted .
Tissue Specificity	Detected in prostate epithelium (at protein level) (PubMed:17338636). Detected in trachea and testis (PubMed:17338636). Highly expressed in benign prostatic hyperplasia and in some prostate cancers, and can also be detected in breast tumor tissue (PubMed:17338636, PubMed:24442440).
Function	similarity:Belongs to the beta-microseminoprotein family.,tissue specificity:Detected in prostate epithelium (at protein level). Detected in trachea and testis. Highly expressed in the human prostate cancer cell line PC-3.,
Background	This gene encodes a member of the beta-microseminoprotein family. Members of this protein family contain ten conserved cysteine residues that form intra-molecular disulfide bonds. The encoded protein may play a role in prostate cancer tumorigenesis. [provided by RefSeq, Jan 2011],

Nanjing BYabscience technology Co.,Ltd

网址: www.njbybio.com

官方热线: 025-5229-8998

监督电话: 15950492658



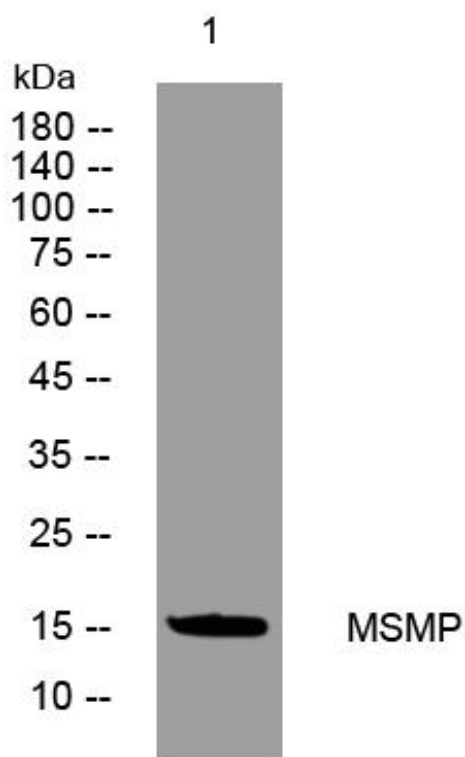
matters needing attention

Avoid repeated freezing and thawing!

Usage suggestions

This product can be used in immunological reaction related experiments. For more information, please consult technical personnel.

Products Images



Western Blot analysis of various cells using MSMP mouse mAb