



PXK mouse mAb

Catalog No	BYmab-08459
Isotype	IgG
Reactivity	Human; Mouse;Rat
Applications	WB
Gene Name	PXK
Protein Name	PXK
Immunogen	Synthesized peptide derived from human PXK AA range: 238-288
Specificity	This antibody detects endogenous levels of PXK at Human/Mouse/Rat
Formulation	Liquid in PBS containing 50% glycerol, 0.5% BSA and 0.02% sodium azide.
Source	Monoclonal, Mouse,IgG
Purification	The antibody was affinity-purified from mouse antiserum by affinity-chromatography using epitope-specific immunogen.
Dilution	WB 1:500-2000
Concentration	1 mg/ml
Purity	≥90%
Storage Stability	-20°C/1 year
Synonyms	
Observed Band	
Cell Pathway	Cytoplasm . Cell membrane ; Peripheral membrane protein . Also associates with the plasma membrane. Isoform 3 is present throughout the cell.
Tissue Specificity	Widely expressed in all tissues examined except in heart. Isoform 1 is expressed in high levels in the brain, skeletal muscle, spleen and testis. Isoform 7 expression has yet to be demonstrated.
Function	domain:The protein kinase domain is predicted to be catalytically inactive.,function:Binds to and modulates brain Na,K-ATPase subunits ATP1B1 and ATP1B3 and may thereby participate in the regulation of electrical excitability and synaptic transmission. May not display kinase activity.,sequence caution:Translated as Gly.,similarity:Belongs to the protein kinase superfamily.,similarity:Contains 1 protein kinase domain.,similarity:Contains 1 PX (phox homology) domain.,similarity:Contains 1 WH2 domain.,subcellular location:Also associates with the plasma membrane. Isoform 3 is present throughout the cell.,tissue specificity:Widely expressed in all tissues examined except in heart. Isoform 1 is expressed in high levels in the brain, skeletal muscle,

Nanjing BYabscience technology Co.,Ltd



spleen and testis, expression of isoform 7 has yet to be demonstrated.,

Background

This gene encodes a phox (PX) domain-containing protein which may be involved in synaptic transmission and the ligand-induced internalization and degradation of epidermal growth factors. Variations in this gene may be associated with susceptibility to systemic lupus erythematosus (SLE). Alternative splicing results in multiple transcript variants. [provided by RefSeq, Jan 2014],

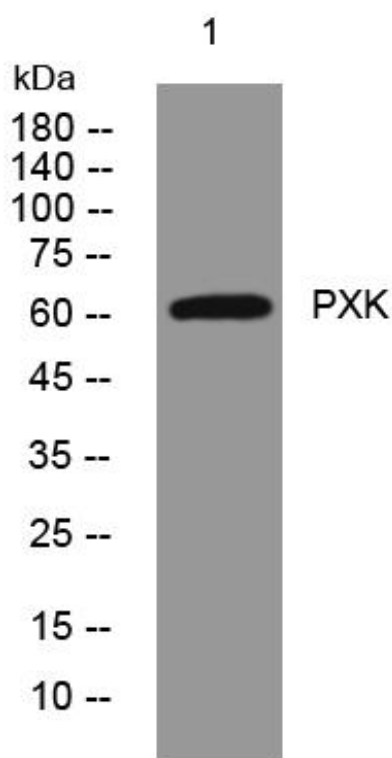
matters needing attention

Avoid repeated freezing and thawing!

Usage suggestions

This product can be used in immunological reaction related experiments. For more information, please consult technical personnel.

Products Images



Western Blot analysis of various cells using PXX mouse mAb