



# CCD92 mouse mAb

Catalog No	BYmab-08451
Isotype	IgG
Reactivity	Human; Mouse
Applications	WB
Gene Name	CCDC92
Protein Name	CCD92
Immunogen	Synthesized peptide derived from human CCD92 AA range: 43-93
Specificity	This antibody detects endogenous levels of CCD92 at Human/Mouse
Formulation	Liquid in PBS containing 50% glycerol, 0.5% BSA and 0.02% sodium azide.
Source	Monoclonal, Mouse,IgG
Purification	The antibody was affinity-purified from mouse antiserum by affinity-chromatography using epitope-specific immunogen.
Dilution	WB 1:500-2000
Concentration	1 mg/ml
Purity	≥90%
Storage Stability	-20°C/1 year
Synonyms	
Observed Band	
Cell Pathway	Cytoplasm, cytoskeleton, microtubule organizing center, centrosome, centriole . Cytoplasm .
Tissue Specificity	
Function	caution:It is uncertain whether Met-1 or Met-18 is the initiator.,
Background	
matters needing attention	Avoid repeated freezing and thawing!
Usage suggestions	This product can be used in immunological reaction related experiments. For more information, please consult technical personnel.

Nanjing BYabscience technology Co.,Ltd

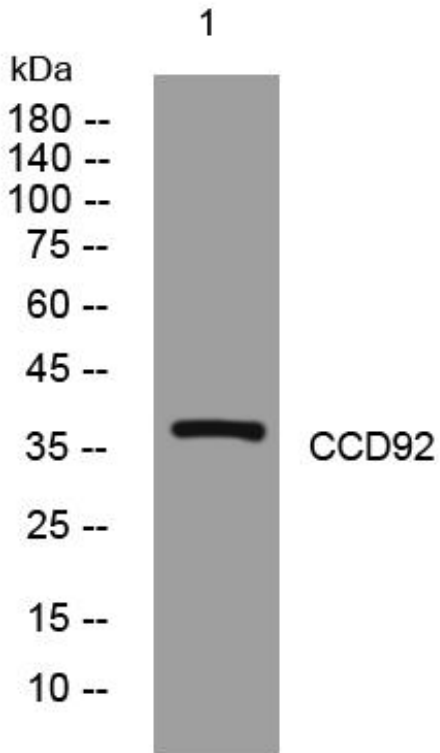
网址: [www.njbybio.com](http://www.njbybio.com)

官方热线: 025-5229-8998

监督电话: 15950492658



## Products Images



Western Blot analysis of various cells using CCD92 mouse mAb