



# KRA14 mouse mAb

<b>Catalog No</b>	BYmab-08443
<b>Isotype</b>	IgG
<b>Reactivity</b>	Human; Mouse
<b>Applications</b>	WB
<b>Gene Name</b>	KRTAP1-4 KAP1.4 KRTAP1.4
<b>Protein Name</b>	KRA14
<b>Immunogen</b>	Synthesized peptide derived from human KRA14 AA range: 5-55
<b>Specificity</b>	This antibody detects endogenous levels of KRA14 at Human/Mouse
<b>Formulation</b>	Liquid in PBS containing 50% glycerol, 0.5% BSA and 0.02% sodium azide.
<b>Source</b>	Monoclonal, Mouse,IgG
<b>Purification</b>	The antibody was affinity-purified from mouse antiserum by affinity-chromatography using epitope-specific immunogen.
<b>Dilution</b>	WB 1:500-2000
<b>Concentration</b>	1 mg/ml
<b>Purity</b>	≥90%
<b>Storage Stability</b>	-20°C/1 year
<b>Synonyms</b>	
<b>Observed Band</b>	
<b>Cell Pathway</b>	keratin filament,
<b>Tissue Specificity</b>	Expressed in the middle/upper portions of the hair cortex, in the region termed the keratogenous zone.
<b>Function</b>	function:In the hair cortex, hair keratin intermediate filaments are embedded in an interfilamentous matrix, consisting of hair keratin-associated proteins (KRTAP), which are essential for the formation of a rigid and resistant hair shaft through their extensive disulfide bond cross-linking with abundant cysteine residues of hair keratins. The matrix proteins include the high-sulfur and high-glycine-tyrosine keratins.,similarity:Belongs to the KRTAP type 1 family.,subunit:Interacts with hair keratins.,tissue specificity:Expressed in the middle/upper portions of the hair cortex, in the region termed the keratogenous zone.,
<b>Background</b>	The main structural proteins of mammalian hair fiber are the hair keratins (see MIM 601077) and the keratin-associated proteins (KAPs), which form a rigid and resistant hair shaft through extensive disulfide bond crosslinking with the

**Nanjing BYabscience technology Co.,Ltd**



abundant cysteines of hair keratins (Shimomura et al., 2002 [PubMed 12228244]).[supplied by OMIM, Jan 2009],

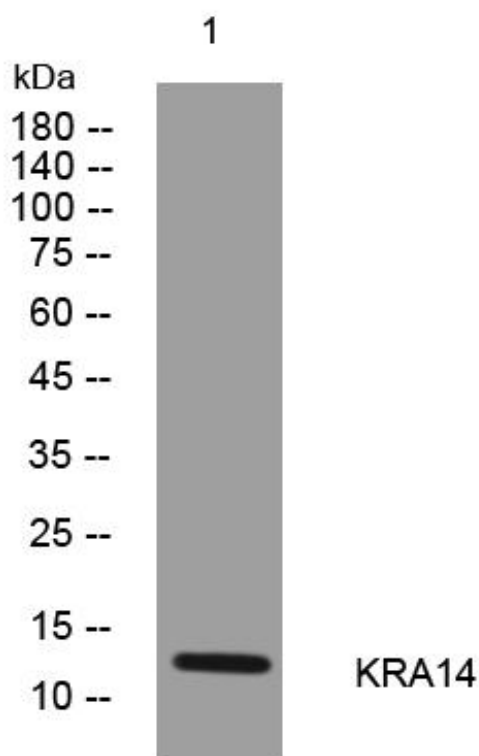
**matters needing attention**

Avoid repeated freezing and thawing!

**Usage suggestions**

This product can be used in immunological reaction related experiments. For more information, please consult technical personnel.

## Products Images



Western Blot analysis of various cells using KRA14 mouse mAb

Nanjing BYabs science technology Co.,Ltd

网址: [www.njbybio.com](http://www.njbybio.com)

官方热线: 025-5229-8998

监督电话: 15950492658