



HIP1R mouse mAb

Catalog No	BYmab-08438
Isotype	IgG
Reactivity	Human; Mouse
Applications	WB
Gene Name	HIP1R HIP12 KIAA0655
Protein Name	HIP1R
Immunogen	Synthesized peptide derived from human HIP1R AA range: 554-604
Specificity	This antibody detects endogenous levels of HIP1R at Human/Mouse
Formulation	Liquid in PBS containing 50% glycerol, 0.5% BSA and 0.02% sodium azide.
Source	Monoclonal, Mouse,IgG
Purification	The antibody was affinity-purified from mouse antiserum by affinity-chromatography using epitope-specific immunogen.
Dilution	WB 1:500-2000
Concentration	1 mg/ml
Purity	≥90%
Storage Stability	-20°C/1 year
Synonyms	
Observed Band	
Cell Pathway	Cytoplasm, perinuclear region. Endomembrane system. Cytoplasmic vesicle, clathrin-coated vesicle membrane. Membrane-associated protein, mainly localized at the endocytic compartments and in the perinuclear region.
Tissue Specificity	Brain, heart, kidney, pancreas, and liver, but not in lung or placenta.
Function	domain:The talin-like domain binds F-actin.,function:Component of clathrin-coated pits and vesicles, that may link the endocytic machinery to the actin cytoskeleton. Binds 3-phosphoinositides (via ENTH domain). May act through the ENTH domain to promote cell survival by stabilizing receptor tyrosine kinases following ligand-induced endocytosis.,similarity:Belongs to the SLA2 family.,similarity:Contains 1 ENTH (epsin N-terminal homology) domain.,similarity:Contains 1 I/LWEQ domain.,subcellular location:Membrane-associated protein, mainly localized at the endocytic compartments and in the perinuclear region.,subunit:Interacts with actin. Does not interact with huntingtin (By similarity). Interacts with CLTB and HIP1.,tissue specificity:Brain, heart, kidney, pancreas, and liver, but not in lung or placenta.,

Nanjing BYabscience technology Co.,Ltd



Background

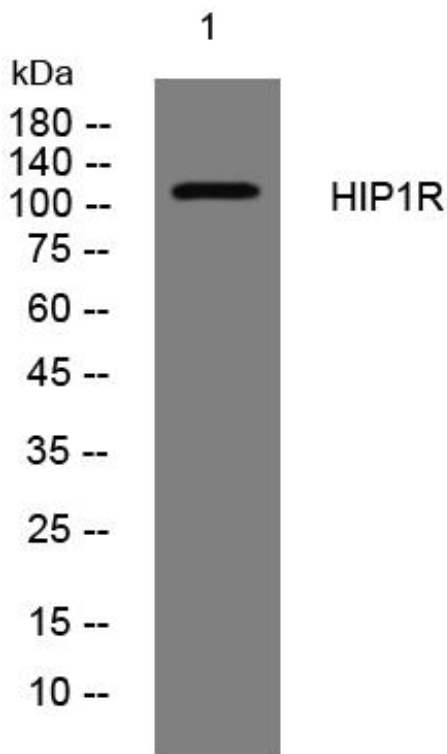
matters needing attention

Avoid repeated freezing and thawing!

Usage suggestions

This product can be used in immunological reaction related experiments. For more information, please consult technical personnel.

Products Images



Western Blot analysis of various cells using HIP1R mouse mAb

Nanjing BYabscience technology Co.,Ltd

网址: www.njbybio.com

官方热线: 025-5229-8998

监督电话: 15950492658