



U17L6 mouse mAb

Catalog No	BYmab-08429
Isotype	IgG
Reactivity	Human;Rat;Mouse;
Applications	WB
Gene Name	USP17L6 USP17C USP17D USP17N
Protein Name	U17L6
Immunogen	Synthesized peptide derived from human U17L6 AA range: 207-257
Specificity	This antibody detects endogenous levels of U17L6 at Human
Formulation	Liquid in PBS containing 50% glycerol, 0.5% BSA and 0.02% sodium azide.
Source	Monoclonal, Mouse,IgG
Purification	The antibody was affinity-purified from mouse antiserum by affinity-chromatography using epitope-specific immunogen.
Dilution	WB 1:500-2000
Concentration	1 mg/ml
Purity	≥90%
Storage Stability	-20°C/1 year
Synonyms	
Observed Band	
Cell Pathway	Nucleus . Cytoplasm .
Tissue Specificity	
Function	catalytic activity:Ubiquitin C-terminal thioester + H(2)O = ubiquitin + a thiol.,caution:The RS447 megasatellite DNA is a highly polymorphic conserved tandem repetitive sequence which contains a copy of USP17. It is present with an interindividual variation in copy number and between 20 to 103 copies can be found in the genome both on chromosome 4 and chromosome 8.,function:Seems to be non-functional in the regulation of apoptosis. Cleaves ubiquitin fusion protein substrates.,similarity:Belongs to the peptidase C19 family. USP17 subfamily.,
Background	

Nanjing BYabscience technology Co.,Ltd

网址: www.njbybio.com

官方热线: 025-5229-8998

监督电话: 15950492658



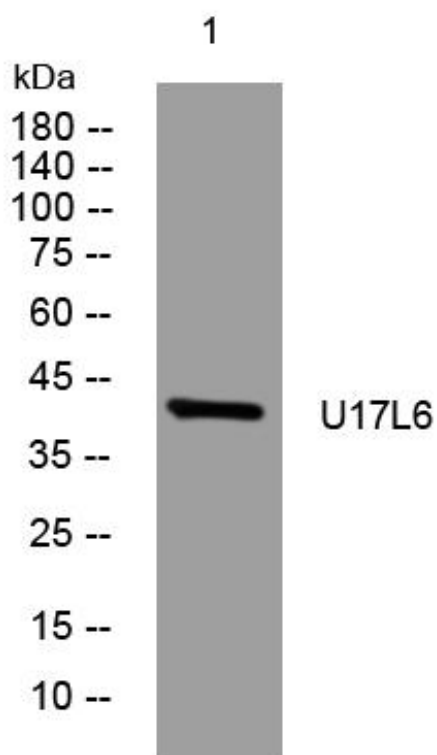
matters needing attention

Avoid repeated freezing and thawing!

Usage suggestions

This product can be used in immunological reaction related experiments. For more information, please consult technical personnel.

Products Images



Western Blot analysis of various cells using U17L6 mouse mAb